



# Effect of Anthropogenic Activities on the Population of Moor Macaques (*Macaca maura*) in South Sulawesi, Indonesia

Víctor Beltrán Francés<sup>1</sup> · Denise Spaan<sup>2</sup> · Federica Amici<sup>3,4</sup> · Risma Illa Maulany<sup>5</sup> · Ngakan Putu Oka<sup>5</sup> · Bonaventura Majolo<sup>6</sup> 

Received: 11 August 2021 / Accepted: 19 January 2022  
© The Author(s) 2022

## Abstract

Forest loss due to anthropogenic activities is one of the main causes of plant and animal species decline. Studying the species' population status (i.e., density, abundance, and geographic distribution) on a regular basis is one of the main tools to assess the effect of anthropogenic activities on wildlife, to monitor population dynamics and to intervene with effective conservation strategies when the population of an endangered species declines. On Sulawesi Island, Indonesia, anthropogenic activities, such as agriculture, are decreasing the remaining natural habitats available for several endemic and endangered species. The effect of this forest loss on the threatened moor macaques (*Macaca maura*) in South Sulawesi is unknown, and data on the population status of this species are needed to design effective conservation strategies. To assess the population status of the moor macaques, we walked linear transects ( $N = 29$ , survey effort = 114 km) at six sites between November 2019 and March 2020 to estimate macaque population density and encounter rate. We tested the effect of anthropogenic activities on macaque encounter rate. Our global density estimate (24 individuals/km<sup>2</sup>) was lower than the overall estimate from the most detailed survey conducted on this species, which covered its whole geographic distribution (36.1 individuals/km<sup>2</sup>). However, these results should be interpreted with caution because the previous density estimate falls within the confidence intervals of our estimate. Furthermore, we found regional declines in moor macaque encounter rates in at least two sites compared with previous studies. We found a high presence of anthropogenic activity in the forests inhabited by macaques. Moor macaques were less abundant in open areas with no forest (i.e., clear cuttings) than in forested areas, and in the presence of nonspecies-specific hunting traps (i.e., wire-loop traps). Moreover, moor macaques were more abundant in areas with a higher presence of humans and domestic animals. Overall, our data suggest that the population of this

---

Handling Editor: Joanna Setchell

Extended author information available on the last page of the article

Published online: 22 February 2022

species may be declining in certain regions but further surveys are needed to corroborate whether this is occurring across the entire geographic distribution.

**Keywords** Anthropogenic activity · Conventional distance sampling · Encounter rate · Line transect surveys

## Introduction

Anthropogenic activities, such as agriculture, mining, and infrastructure development, are the main drivers of the modification and deterioration of natural environments (Sih, 2013; Díaz *et al.*, 2019). To date, almost 97% of the terrestrial surface of the planet has been altered by anthropogenic activities (Bersacola *et al.*, 2021; Dirzo *et al.*, 2014; Plumptre *et al.*, 2021). Such activities affect species survival through natural resource exploitation and deforestation (Halpern *et al.*, 2008; Parmesan and Yohe, 2003). For instance, agricultural areas are expanding in tropical regions, thereby replacing forests (Hansen *et al.*, 2013; Phalan *et al.*, 2013). In primate habitats, anthropogenic activities cause reductions in forest cover and resource availability, threatening primate populations (Boyle and Smith, 2010; Estrada *et al.*, 2017; Marsh & Chapman, 2013; Spaan *et al.*, 2020). This is especially the case in Southeast Asia, where at least 91% of the primate populations are declining (Amano *et al.*, 2021; IUCN, 2019).

Species' population status (i.e., density, abundance, and geographic distribution) may vary along space and time as a result of habitat modification by anthropogenic activities (Estrada *et al.*, 2017; Wich & Marshall, 2016). Monitoring primate populations therefore provides important insights into how primates are adjusting to these modified habitats. Line transect surveys are the most commonly used method to survey primate populations (Buckland *et al.*, 2010; Campbell *et al.*, 2016). During the past 50 years, data provided by line transect surveys have been used to monitor population dynamics and to take timely management decisions to protect declining populations of endangered species before it is too late (Caro *et al.*, 2012; Stokes *et al.*, 2010).

Sulawesi Island, Indonesia, lies at the centre of the Wallacea biodiversity hotspot and is inhabited by several endemic plant and animal species. For example, between 25% and 47% of all mammals, birds, amphibians, and reptiles living on the island are endemic (Lee *et al.*, 2007). However, many species inhabiting the island are endangered, because South Sulawesi is one of the most populated areas of Indonesia (the capital Makassar is the 4th largest city of Indonesia). Human population density in Sulawesi has quadrupled over the past 20 years (Supriatna *et al.*, 2020). The dramatic increase in human population, together with logging, hunting, mining, agricultural, and commercial development, constitutes a crucial threat to biodiversity conservation in Sulawesi (Kelley, 2018; Supriatna *et al.*, 2020). Moreover, deforestation has increased rapidly in recent years, in part due to the cultivation of corn, coffee, cocoa, and oil palm (Phalan *et al.*, 2013; Supriatna *et al.*, 2020), forcing wildlife to live in relict patches of mature forest or in areas strongly affected by

anthropogenic activities (e.g., agriculture, logging, farming). To date, only 15% of Sulawesi forests are still intact, mostly steep, not-easily accessible areas where farming, logging, and other anthropogenic activities are difficult to be conducted and where resources for wildlife (i.e., food, water, and sleeping trees) are scarce (Supriatna *et al.*, 2015, 2020).

Sulawesi hosts seven species of the genus *Macaca*, which are all endemic (Riley, 2010). Of these, the moor macaque (*Macaca maura*) inhabits the Southern part of the island and is currently listed as Endangered by the IUCN Red List of Threatened Species (Lee *et al.*, 2020). Moor macaques live in groups of around 40 individuals, with female philopatry and male dispersal (Okamoto *et al.*, 2000). The last study estimating the density (i.e., number of individuals/area) and structure of the moor macaque population was published more than 20 years ago (Okamoto *et al.*, 2000) and only surveyed a small part of the species' geographic range (i.e., the Karaenta Natural Reserve). In this area, group size grew continuously during the 10 years of the study, from 20 to 41 individuals, with a population density of 70 individuals/km<sup>2</sup> (Okamoto *et al.*, 2000). A more recent report, published in Bahasa Indonesian, surveyed one single regency (Pangkep, South Sulawesi) located in the Western part of their geographic range and estimated a population density of 98 individuals/km<sup>2</sup> (Labahi, 2010).

To our knowledge, the only survey that has estimated population density across the entire known geographic range of moor macaques was conducted 33–35 years ago, between December 1987 and October 1989 (Supriatna *et al.*, 1992). This study estimated that the population of moor macaques was decreasing strongly (Supriatna *et al.*, 1992). Moreover, groups of moor macaques inhabiting areas with intense anthropogenic activity (e.g., logging or farming) were smaller, had a lower ratio of infants and juveniles to adults, and a population density less than half that of groups in protected areas (20 vs. 50 individuals/km<sup>2</sup>, respectively; Supriatna *et al.*, 1992). Finally, the moor macaque population appeared to be mainly threatened by the lack of protected areas in the species' range and by the increasing impact of anthropogenic activities on macaques in all the areas surveyed, including illegal poaching and poisoning (Supriatna *et al.*, 1992). Moor macaques have been mainly found in resource abundant lowland forests (Albani *et al.*, 2020; Li & Rogers, 2005) and, at lower densities, in karst areas (Lee *et al.*, 2020). In the last decade, however, the moor macaque geographical range has become largely restricted to karst areas (Albani *et al.*, 2020; Supriatna *et al.*, 2020), likely because these areas are less accessible and thus less impacted by anthropogenic activities.

In response to the decline in the moor macaque population, the Indonesian authorities created the Bantimurung-Bulusaraung National Park in 2004. Although moor macaques are being studied in the National Park (Albani *et al.*, 2020; Hanson and Riley, 2018; Morrow *et al.*, 2019; Okamoto *et al.*, 2000; Riley *et al.*, 2014), it is not clear to what extent the National Park is preventing the decline of the macaque population (Lee *et al.*, 2020), as the park also is affected by the increase in anthropogenic activities occurring throughout Southern Sulawesi. For example, the second busiest road crossing South Sulawesi traverses the National Park.

The lack of recent data on the moor macaque population size makes it difficult to reliably estimate its conservation status and evaluate whether current conservation

strategies are effective (Junker *et al.*, 2020; Lee *et al.*, 2020). Monitoring the population density of moor macaques, both in and outside protected areas, is essential to identify macaque-rich areas that should be protected (Ahmed *et al.*, 2021; Gray *et al.*, 2016; Lee *et al.*, 2020; Milda *et al.*, 2020). We surveyed six sites across South Sulawesi to provide updated estimates of (a) the size of the moor macaque population and (b) the effect of anthropogenic activities on the regional relative abundance of macaques (i.e., the number of individuals/km surveyed). If populations are declining due to anthropogenic activities, we predict that (1) overall and regional macaque population density would be lower than previous estimates; and (2) the relative abundance of moor macaques would be negatively correlated with anthropogenic activities, estimated by, e.g., the presence of humans, of domestic animals, or of traps.

## Methods

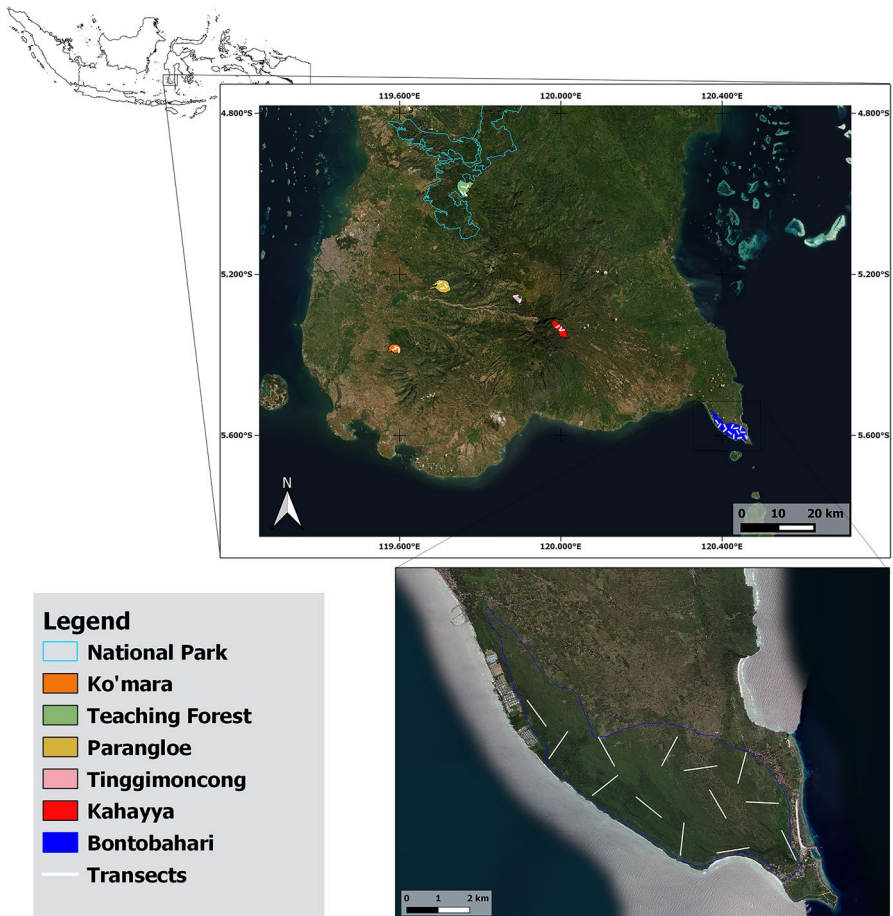
### Study Site

We surveyed the Southern part of the geographic range of moor macaques, from Bontobahari (5°33'1.33"S, 120°24'45.78"E) to Camba (4°59'36.60"S, 119°45'7.13"E; Fig. 1). The areas surveyed lie between zero and 2,874 m.a.s.l. and are composed of a mosaic of deciduous forest interspersed with grasslands (resulting from habitat conversion), primary and secondary forests surrounded by agricultural areas, karst forests, and savannah (Lee *et al.*, 2020).

### Data Collection

We selected areas to be surveyed within the geographic range of moor macaques described by the IUCN (Lee *et al.*, 2020; Supriatna *et al.*, 2008). We selected areas based on: 1) the presence of suitable habitats for the macaques; and 2) informal interviews with the local community (i.e., people living close to the forest or working in the forest, and local authorities) about the presence/absence of macaques in the area. Since 2018, we have collected information about the presence of moor macaques in different habitat types within its geographical distribution (unpublished data) during the data collection for other research projects in Sulawesi (Amici *et al.*, 2020; Beltrán Francés *et al.*, 2020; Gomez-Melara *et al.*, 2021; Hernández Tienda *et al.*, 2021). Therefore, we used this information to select suitable habitats to survey the moor macaque population (Kuhl *et al.*, 2008).

We considered a habitat as suitable for macaques when forest cover was  $\geq 50\%$  per km<sup>2</sup>, because this is necessary for moor macaques to find shelter and food (Fotang *et al.*, 2021). We considered primary, old and young secondary forest and agroforest (i.e., forest area composed of natural plant species growing among crops; Nekaris *et al.*, 2017) as suitable forest types for moor macaques. We did not consider production forests (i.e., consisting of nonnative tree species, such as rubber production forest) as a suitable habitat. We determined forest cover every 10 km<sup>2</sup> in



**Fig. 1** Map of South Sulawesi showing the location of 6 areas surveyed in the *Macaca maura* geographic range and of the transects walked in Bontobahari between November 2019 and March 2020.

the overall study area, using satellite images from 2019 (Landsat) in Google Earth Pro (v.7.3.3).

To conduct informal interviews with local communities, we first informed local authorities at each study site about the aims of our project and the importance of conducting interviews with the communities to gather information on the distribution of moor macaques. After obtaining verbal informed consent from the local authorities and the interviewees, we conducted the interviews outside the interviewee's house at least 1 week before surveying the area. We conducted all interviews in the presence of local authorities.

We conducted line transect surveys to estimate the presence/absence of moor macaques and their population size and composition (Butynski, 1990; Harcourt, 1995; Plumptre & Reynolds, 1994; Worman & Chapman, 2006). We positioned twenty-nine, 1 km-long transects pseudo-randomly on the satellite image of the

selected areas (Google Earth Pro, v.7.3.3), trying to cover each area as much as possible. We covered 12% of the overall selected area (effort = 9.12 km<sup>2</sup>; Table 1). We calculated the overall area covered during surveys by multiplying the number of transects by the area covered by each transect (i.e., effort: length of the transect times the width of the area checked at both sides of the transect), divided by the total size of the areas surveyed. The satellite image included altitude contour lines (every 50 m) providing information on the topography of the terrain. We distributed transects randomly on the map and relocated transects that were less than 1 km from another transect or outside of suitable areas, by moving them to an empty area while maintaining the same orientation. We also reorientated transects that were located over rivers or areas with steep slopes. We ground-truthed the location of transects once we were in each location to make sure that the slope and vegetation of the area matched what was predicted by the satellite images. We established 1 km as the minimum distance between transects based on the size of the area being surveyed and the expected density and home range of the macaques (Okamoto *et al.*, 2000; Supriatna *et al.*, 1992). The distance between transects in each surveyed area ranged from 1 km to 1.81 km, with a mean distance of 1.23 km.

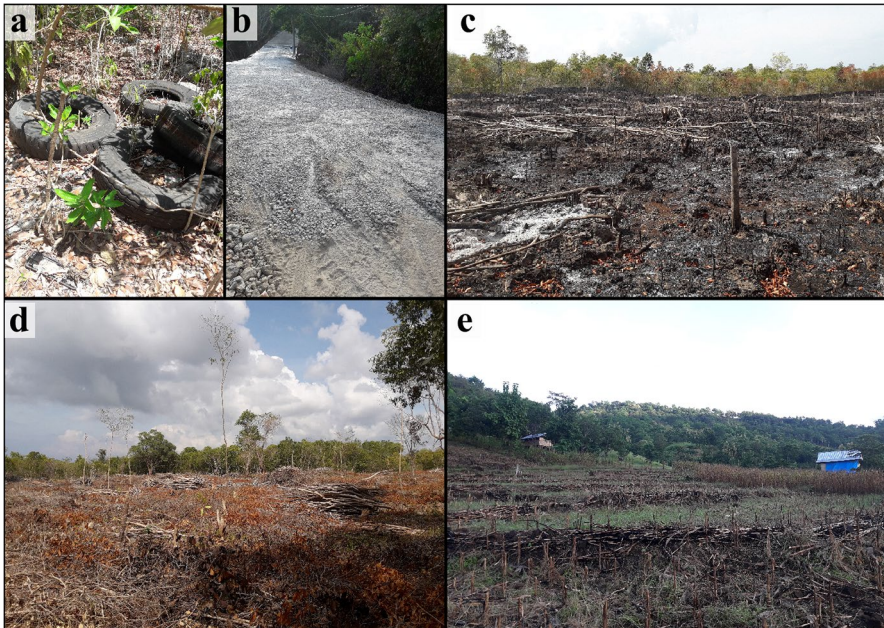
The first author collected the data between November 28, 2019 and March 20, 2020. We walked each transect twice on two consecutive days, between 9:00 and 15:00, at a maximum speed of 1 km/hr. While walking the transects, the first author used a GPS unit (Locus Map 4.1; Asamm Software 2009) to keep line transects correctly orientated from start to end. When transects included steep inclines, declines, and gorges, we used marked stakes to make accurate distance and orientation measurements (Alldredge *et al.*, 2007). During the survey, we recorded GPS coordinates every time that we detected a macaque. To test whether macaques were found above 1,000 m a.s.l, we used the GPS coordinates to estimate the elevation of all sightings recorded using Google Earth Pro (v.7.3.3). Whenever possible, we recorded the sex (in adults) and age category (using two categories: adult and immature, which included subadults, juveniles, and infants) of each individual detected. We determined sex and age category by observing the genitalia (i.e., individuals with evident genitalia: testicles for males, anogenital swelling for females) and body size (Okamoto *et al.*, 2000). When a female macaque did not present an anogenital swelling, we used body size to determine age, as immatures are smaller than adults in this species (Okamoto *et al.*, 2000). We took a picture of each individual observed to check sex and age after data collection, where necessary. If we did not observe a macaque directly above or on the transect (i.e., perpendicular distance = 0), we used a Laser View Finder (Urcei ZL-100) to measure the perpendicular distance from the transect centreline to the individual. Because there are no published data on group spread in our study species, we considered multiple sightings of macaques along the same transect as belonging to the same group, based on the mean group spread of a closely related species, Celebes crested macaque (*Macaca nigra* 1,128 m<sup>2</sup>; Waterman, 2021).

To test the effect of anthropogenic activities on the moor macaque population, we recorded the presence and type of anthropogenic activity observed during surveys (Fig. 2). We measured anthropogenic activities as nonmutually exclusive categories: (1) number of humans (e.g., farmers or loggers) detected during the transect walk,

**Table 1** Regions where we collected data during the population survey, area covered during transect walks and population density estimates per region for *Macaca maura* from November 2019 to March 2020 (South Sulawesi, Indonesia)

Region	Area (km <sup>2</sup> )	Forest cover (km <sup>2</sup> )	Transects (N)	Effort (km <sup>2</sup> )	Groups (N)	Macaques (N)	Group encounter rate (groups/km)	Individual encounter rate (individual/km)	Density (individuals/km <sup>2</sup> )	Confidence intervals
Bontobahari	28.30	26.90	13	4.15	7	57	0.27	2.20 (3.39*)	27.4 (33.9*)	13.7-55.0
Camba	12.70	12.10	4	1.27	2	13	0.25	1.63		
Kahayya	9.45	7.95	4	1.24	2	12	0.26	1.55		
Tinggimoncog	3.60	3.40	2	0.59	0	0	0.0	0.0 (0.0*)		
Parangloe	12.70	10.80	3	0.96	1	8	0.16	1.33		
Ko'mara	6.76	5.66	3	0.91	3	17	0.53	2.98		
Overall	73.51	66.81	29	9.12	15	107	0.26	1.88 (3.83*)	24.0 (36.1*)	14.6-39.4

\*Data from Supriatna *et al.*, 1992



**Fig. 2** Examples of anthropogenic activities recorded during data collection in the geographic range of *Macaca maura*, South Sulawesi, between November 2019 and March 2020: **a** garbage; **b** road; **c** fire; **d** logging; **e** agricultural plots.

(2) number of domestic animals (i.e., cows, goats, sheep or dogs) detected during the transect walk, (3) number of hunting traps (i.e., nonspecies-specific snare traps used to hunt other species but that might accidentally trap macaques) detected during the transect walk, (4) open areas with no forest (i.e., agricultural plots, clear cutting, or logging, in  $m^2$ ), and (5) areas with other anthropogenic activities (i.e., camp, fire, garbage/waste disposal, or construction, in  $m^2$ ). The use of snare traps is banned in Indonesia, but this hunting practice is still used in some areas. When we encountered any of these types of anthropogenic activity along the transect, we recorded the GPS location. When we encountered open areas or areas with other anthropogenic activities, we recorded the perpendicular distance from the transect centreline to the nearest forest patch using the Laser View Finder and the distance walked through the anthropogenic activity area (marking the beginning and the end of the area with a GPS). We used these distances to estimate the size of open areas and areas with other anthropogenic activity during the transect walk in  $km^2$  (Fig. 1).

## Data Analysis

We estimated moor macaque population density using the conventional distance sampling (CDS) method for line transect surveys (Buckland *et al.*, 2001, 2015) in Distance software (Thomas *et al.*, 2010). CDS assumes that all the animals on the

transect are detected and that detection probability decreases with distance from the transect (Buckland *et al.*, 2001, 2015; Spaan *et al.*, 2019). Distance software uses the perpendicular distances ( $x$ ) to model the detection function  $g(x)$ .  $g(x)$  is defined as the probability of detecting a macaque that is at distance  $x$ , where  $0 \leq x \leq w$  and  $w$  is the truncation distance (i.e., maximum perpendicular distance from the transect centreline beyond which detected individuals are excluded from the density estimation). To select a plausible and parsimonious model estimating  $g(x)$ , we tested three key functions (i.e., uniform, half-normal, and hazard-rate) with three adjustment terms (i.e., cosine, simple polynomial, and hermite polynomial; Buckland *et al.*, 2001, 2015; Spaan *et al.*, 2019). We compared the models obtained using the Akaike information criterion (AIC) and chose the best fitting model(s) that differed less than 2 units from the lowest AIC (i.e., Delta AIC < 2) and had the fewest parameters (Buckland *et al.*, 2001). To improve the robustness of the perpendicular distance data analysis, we right-truncated  $w$  to 5%, discarding the largest distances from the analysis (Buckland *et al.*, 2001; Marques *et al.*, 2011; Valente *et al.*, 2016; Spaan *et al.*, 2019). We calculated the overall population density based on all sites and for sites with observations of at least 40 individual macaques (Buckland *et al.*, 2001; Marshall *et al.*, 2008). Finally, for a more detailed assessment of whether the population of moor macaques is declining, we compared the relative abundance (encounter rates) of macaques at each site that was also surveyed in the previous survey (Supriatna *et al.*, 1992). For this comparison, we used individual encounter rates (number of individuals encountered per kilometer walked) for each site and transect (Chapman *et al.*, 2018; Spaan *et al.*, 2020). To calculate individual encounter rates from the previous study (because these data were not available), we estimated the distance walked in each site by Supriatna *et al.* (1992) by dividing the area surveyed by the width of the transects (100 m; Southwick & Cadigan, 1972; Struhsaker & Eisenberg, 1981; Wilson & Wilson, 1975).

We tested the effect of anthropogenic activity on moor macaque encounter rate by using a generalized linear mixed model (GLMM) with a Poisson distribution and log link using the `glmmTMB` package (version 1.0.1; Brooks *et al.*, 2017) in R (R Development Core Team, 2013, version 3.5.2). We entered the individual encounter rate per transect into our model as a dependent variable. We entered the length of the transect as an offset term. We included the following test predictors: (1) number of humans, (2) number of domestic animals, (3) number of nonspecies-specific traps, (4) open areas, and (5) other anthropogenic activities. We defined a single transect as the unit of analysis. Finally, because we walked each transect twice, we entered transect identity as a random factor (Bolker *et al.*, 2009). We  $z$ -transformed continuous predictor variables before running the analyses to improve normality and facilitate interpretation of the results (Kirkpatrick *et al.*, 2017). We used likelihood ratio tests to compare the full model, containing all predictor variables, to a null model containing only the random factor and the offset term (Forstmeier & Schielzeth, 2011). If we found a significant difference between the full and the null model, we conducted likelihood ratio tests to obtain the  $P$  values for each test predictor via single-term deletion, using the R function `drop`. We detected no stability, convergence, and dispersion problems with the GLMM, using the DHARMA

package (Hartig, 2021). Variance Inflation Factors (VIFs) were minimal for all test predictors (maximum VIF = 1.95), indicating low collinearity (Field, 2005).

## Ethics Note

Permission to conduct the informal interviews and the population survey was granted by the RISTEKDIKTI (Indonesian Foreign Research Permit Division, Ministry of Research and Technology/National Research and Innovation Agency). RISTEKDIKTI also granted access to the moor macaques. This study followed the Code of Best Practices for Field Primatology, from the International Primatological Society (2014). The authors have no conflict of interest to declare.

**Data Availability** The datasets generated during and/or analysed during the current study are available from the corresponding author on reasonable request.

## Results

We selected six areas to survey (Fig. 1), which were mostly covered by forests (91% of surveyed areas; Table I). During the 57 km of transects surveyed ( $n = 29$ ; Table I), we sighted 107 moor macaques belonging to 15 groups (Table I; Fig. 1). Overall macaque encounter rate was 1.88 individuals per kilometer walked, with the highest encounter rate in Ko'mara (2.98 individuals/km) and the lowest in Tinggimoncong (0 individuals/km; Table I). We encountered macaques on 52% of the transects (15/29), and during both transect walks in only 17% of the transects (5/29). We observed moor macaques at elevations between 18 and 1316 m a.s.l. (mean:  $287 \pm$  SD: 372 m). Both individual and group encounter rates were higher in areas under 1,000 m a.s.l. (2.08 individuals/km; 0.29 groups/km) than above 1,000 m a.s.l. (1.05 individuals/km; 0.18 groups/km), but this difference was not statistically significant (individuals: ANOVA:  $F = 3.043$ ,  $df = 1$ ,  $P = 0.156$ ; groups: ANOVA:  $F = 1.447$ ,  $df = 1$ ,  $P = 0.295$ ). We determined the sex and age category for 34 monkeys (32%): 16 adult males, 8 adult females, and 12 immatures of unspecified sex.

As the probability of detecting a macaque decreased with distance from the transect centerline, the detection function that best fit the perpendicular distance data was the half-normal key function with a simple polynomial adjustment term. We discarded two perpendicular distances (62 m and 64 m) from the analysis after right-truncating the largest distances. We estimated the overall population density as 24.0 individuals/km<sup>2</sup> (Table I).

We found signs of anthropogenic activity on all 29 transects. "Other anthropogenic activities" was the most frequent activity observed (97%). Agriculture was more abundant in Northern areas (Tinggimoncong, Ko'mara and Kahayya; 75% of the transects) than in the Southern area (Bontobahari; 30% of the transects), where the weather is drier and agricultural fields are therefore less common. We found domestic animals on 62% of the transects (18/29 transects) and hunting traps on 5

transects, all in the Southern area (38% of transects in Bontobahari). The number of traps per transect ranged from 0 to 3.

The full GLMM model differed significantly from the null model (likelihood ratio test:  $\chi^2 = 16.883$ ,  $df = 5$ ,  $P = 0.005$ ). As predicted, the individual encounter rate was lower in areas with more open spaces and with no trees than in areas with greater forest cover (Table II). Moreover, the individual encounter rate was lower when more traps were found in an area and higher when more domestic animals were sighted in the area (Table II). The other test predictors had no significant effect on individual encounter rate (Table II).

## Discussion

Our findings suggest that the population density of moor macaques is low outside of protected areas and support our hypothesis that the population of this species is declining in several regions, especially in the Southern forests of the species' geographic range. Specifically, we found a lower macaque encounter rate in 2020 than at the same sites surveyed in 1992. Furthermore, we found a high presence of anthropogenic activity in forests inhabited by moor macaques, and a negative effect of the number of nonspecies-specific hunting traps in the forest on macaque encounter rate.

We calculated the overall population density and the individual encounter rate, from the data provided in the previous study of moor macaque populations, as 36.1 individuals/km<sup>2</sup> and 3.83 groups/km (Supriatna *et al.*, 1992). Although direct comparisons between studies are difficult, due to differences in the sites surveyed and the methods used to estimate population density, our overall density estimate (24 individuals/km<sup>2</sup>) and encounter rate (0.94 individuals/km) were lower, but the density estimate from 1992 (Supriatna *et al.*, 1992) falls within the confidence intervals of our estimate. Therefore, these differences should be interpreted with caution and further surveys are needed to verify whether the overall moor macaque population density is decreasing. Moreover, surveys in the Northern region of the species' geographical distribution are urgently needed to understand the current state of populations there.

**Table II** Results of a GLMM model testing the effect of anthropogenic activities on the population size of *Macaca maura* from November 2019 to March 2020 (South Sulawesi, Indonesia)

	Estimate	SE	2.5% CI	97.5% CI	$z$	LRT	df	$P$
Intercept	-7.84	0.567	-8.951	-6.728	-13.825	-	-	-
Presence of humans	0.61	0.3234	-0.028	1.240	1.874	3.612	1	0.057
Presence of domestic animals	0.93	0.387	0.171	1.689	2.401	6.732	1	<b>0.009</b>
Presence of traps	-1.42	0.872	-3.128	0.290	-1.627	5.353	1	<b>0.021</b>
Open areas	-0.96	0.466	-1.874	-0.048	-2.063	5.148	1	<b>0.023</b>
Other anthropogenic activity	-1.02	1.115	-3.208	1.163	-0.917	2.633	1	0.105

In bold are  $p$  values <0.05

In the Southern part of Sulawesi (Bontobahari), macaque encounter rate was relatively high in 1992 (3.39 individuals/km) but decreased to 2.20 individuals/km during our survey. Worryingly, although this area falls under local protection (i.e., logging and hunting are forbidden by the local government and communities), forest loss is still occurring due to the expanding tourism industry and agriculture (Supriatna *et al.*, 2020). Furthermore, the long dry season in this Southern area (7 dry months per year on average; Supriatna *et al.*, 1992) may further increase the negative effects of anthropogenic activities on the moor macaque population (Campos *et al.*, 2017; Garber *et al.*, 2020; van Schaik & Brockman, 2005). For instance, sleeping sites are scarce in the area due to logging for the traditional boat building industry (Supriatna *et al.*, 1992), and forest recovery after logging may be strongly hindered by dry climatic conditions (Elias *et al.*, 2020; Graham *et al.*, 2016; Lewis *et al.*, 2015; Stewart *et al.*, 2020).

We observed a similar decrease in moor macaque encounter rate in the National Park in the district of Camba. In mixed primary and secondary forests, we estimated macaque encounter rate at 1.63 individuals/km. Encounter rate in the closest location monitored in 1992 (Karaenta, 7 km from Camba, located in the same National Park) was estimated at 5.19 individuals/km. Although the forest of Camba is protected by Bantimurung-Bulusaraung National Park, human settlements and road traffic are abundant (Supriatna *et al.*, 1992; Zak and Riley, 2017), putting macaques at risk of road accidents and food-provisioning, which can have deleterious health effects (Healey *et al.*, 2020; Riley *et al.*, 2021). Despite the implementation of protective measures in this region of Southern Sulawesi, ongoing anthropogenic activities are still likely to threaten the long-term maintenance of moor macaque populations.

One of the main anthropogenic activities in Sulawesi outside protected areas is agriculture (Supriatna *et al.*, 2020). As a result, primates are often found in areas where agricultural fields and forests are mixed (Campbell-Smith *et al.*, 2011; Estrada *et al.*, 2012). We conducted macaque surveys in agroforests (e.g., corn and coffee plantations interspersed or surrounded by forest) and found that moor macaque encounter rate was lower during our survey than in 1992. For instance, moor macaque encounter rate in agroforests in Ko'mara was estimated at 2.98 individuals/km, the highest value among our survey regions, but still far from the 6.34 individuals/km estimated in similar agroforests 32 years ago (Supriatna *et al.*, 1992). During our surveys, we observed macaques inhabiting agroforests in Ko'mara feeding on corn plantations. Moor macaques prefer corn and fruit crops to coffee, cacao, or rice (Supriatna *et al.*, 1992; Zak and Riley, 2017). It is therefore possible that the type of crop explains the high encounter rate of macaques estimated in Ko'mara, an area mainly covered by corn plantations. In addition, some of the local people that we interviewed in Ko'mara mentioned that several macaque groups use agricultural fields to move between forest patches. Thus, the combination of small-scale agricultural plots with well-conserved forest, at the landscape scale, may have a positive effect on moor macaque populations (Kiffner *et al.*, 2020). This is in line with studies showing that agroforests can support populations of several primate species (Campbell-Smith *et al.*, 2010; Estrada *et al.*, 2012; Riley, 2010). A better understanding of the effect of agroforests on the abundance and distribution of moor macaques is therefore crucial to develop effective conservation strategies that benefit

local farmers and macaques. We suggest that such studies should be performed at the landscape scale (Arroyo-Rodríguez & Fahrig, 2014; Galán-Acedo *et al.*, 2019; Junker *et al.*, 2020) to determine the importance of the remaining forest cover for the use of agroforests by macaques.

Anthropogenic activities are concentrated in lowland areas of Sulawesi, and as a result, moor macaque populations are likely displaced to remnant forest patches at higher altitudes (i.e., mountains and karst towers; Albani *et al.*, 2020; Supriatna *et al.*, 2020). To date, moor macaques have been found from 0 to 2,000 m a.s.l. (Lee *et al.*, 2020). In our study, encounter rate was higher at lower altitudes (e.g., Ko'mara, 300 m a.s.l.; Table 1) than in similar habitats located at elevations beyond 1,000 m a.s.l. (e.g., in Kahaya, at 1,200 m a.s.l.), although the difference was not significant. Further data are needed to determine whether groups of macaques inhabiting highland areas, where resources are scarce compared with lowland areas (Supriatna *et al.*, 2020), are smaller (Albani *et al.*, 2020; Lee *et al.*, 2020). If this hypothesis is confirmed, groups of moor macaques that have been forced to live in the mountains due to anthropogenic activities may face greater ecological challenges and be at greater risk of extinction. We did not observe any macaques in Tinggimoncong, a mountainous area (1,500 m a.s.l.) composed of a mix of young and old secondary forest, pine forest, and agriculture fields (e.g., vegetables, coffee, and corn). This result is in line with the data reported in the last survey in the region, where no macaques were observed either (Supriatna *et al.*, 1992). The high location of the region and the increase in agricultural fields in the area (Supriatna *et al.*, 2020) may explain the continued scarcity of macaques in Tinggimoncong.

As a result of a rapid reduction in forest cover over the past 30 years (Phalan, 2013; Supriatna *et al.*, 2020), some of the surveyed areas are separated by  $\geq 40$  km and are not connected by ecological corridors. The southernmost forest patch we surveyed (Bontobahari), for instance, is isolated from other forests by agricultural fields and human settlements, limiting macaque dispersal or causing them to take potentially deadly risks, such as crossing highly trafficked roads. The lack of ecological corridors connecting the different areas inhabited by moor macaques implies that their populations are likely fragmented, limiting gene flow and potentially affecting long-term population viability (Fa & Tagg, 2016; Meijaard & Nijman, 2000). Furthermore, moor macaque encounter rate was positively associated with forest cover, and macaques were seldomly observed in open areas. Therefore, conservation efforts should focus on protecting the remaining forests of South Sulawesi from forest conversion to other land covers (Malik *et al.*, 2015; Supriatna *et al.*, 2020; Waluyo *et al.*, 2005; Whitten & Henderson, 2012) to maintain connectivity between remnant subpopulations.

We found that the number of macaques was significantly lower in areas where snare hunting-traps were more abundant. Although these traps are mostly used by local people to hunt other species of mammals (e.g., wild pigs; personal observation; Latinne *et al.*, 2020), the use of nonspecies-specific traps may affect the population of protected and threatened species, including moor macaques (Borgerson, 2015; Rosenbaum *et al.*, 1998; Waller & Reynolds, 2001). This result is in line with studies of other species. For instance, the use of snare traps to hunt tigers (*Panthera tigris*) in Sumatran forests led to a decrease in the population of Malayan tapir (*Tapirus indicus*; Campbell *et al.*, 2019). Populations of terrestrial primate species have

also been negatively affected by the presence of snare traps in their habitats (Fa & Yuste, 2001; Kumar & Sankhyan, 2021; Munn, 2006; Quiatt *et al.*, 2002; Yersin *et al.*, 2017). For example, chimpanzee (*Pan troglodytes*) populations inhabiting areas where snare traps are present show lower survival rates due to the wounds inflicted by these traps (Munn, 2006; Yersin *et al.*, 2017). Deforested areas may induce more terrestrial habits in the primate species occurring there, increasing the negative effects of snare traps on primate populations (Figel *et al.*, 2021). The high rate of deforestation in South Sulawesi (Supriatna *et al.*, 2020), together with the presence of snare traps in areas where they occur, may therefore negatively affect the survival of moor macaques. The consistent enforcement of banned, nonspecific hunting techniques, together with the implementation of long-term and local conservation projects, may reduce this threat to macaques and other terrestrial species (Gray *et al.*, 2018)

We found that macaque encounter rate was higher in areas with a higher number of domestic animals, which can be considered a proxy of the intensity of anthropogenic activity in an area. There are three plausible explanations for these unexpected results. First, it is possible that macaques prefer to use relatively flat areas (compared with karst areas), which also are usually preferred by farmers and shepherds for their crops and herds (Albani *et al.*, 2020; Anderson & Mammides, 2020; Estrada *et al.*, 2017; Mwenja, 2007). Second, these results may suggest that macaques often are found near human settlements because of increased anthropogenic activity and habitat loss (Estrada *et al.*, 2012, 2017). For instance, macaques living in human-modified habitats may find resources (e.g., food and water) in areas close to human settlements in the form of crop fields or water tanks (Sha *et al.*, 2009). Finally, shepherds might be using the forests close to their settlements to feed their cattle, increasing competition for available food resources (Wich & Marshall, 2016). This scenario increases the risk of human-macaque conflict and persecution due to crop foraging (Riley & Priston, 2010) and represents a significant threat for the persistence of moor macaque populations. Furthermore, increasing interactions between wildlife and domestic animals enhance opportunities for pathogen transmission (Jori *et al.*, 2021), especially in human-modified habitats (Jones *et al.*, 2013). For instance, several Asian endemic pig species are threatened by a virus transmitted by domestic pigs (*Sus scrofa*; Luskin *et al.*, 2021) and endangered species, such as the African wild dog (*Lycaon pictus*) or the Ethiopian wolf (*Canis simensis*), face disease outbreaks due to interactions with free-ranging livestock in their habitats (Higgitt *et al.*, 2019; Johnson *et al.*, 2014). Coexistence between wildlife and domestic animals therefore should be monitored by conservation authorities (Kiffner *et al.*, 2020).

Sulawesi Island lies at the centre of the Wallacea biodiversity hotspot, one of the world's 36 biodiversity hotspots (<https://www.conservation.org/priorities/biodiversity-hotspots>), and the forests inhabited by moor macaques also host many other endemic and endangered species (Brambach *et al.*, 2017; Evans *et al.*, 2003). If deforestation continues at current rates, moor macaque habitat will be increasingly threatened, potentially leading to local population extinctions (Supriatna *et al.*, 1992, 2020). Urgent conservation measures are therefore needed to conserve the forests of Sulawesi and the species that inhabit them (Estrada *et al.*, 2018; Supriatna *et al.*, 2020). Conservation measures should include extended protection of moor macaque habitat (with corridors connecting isolated areas), projects encouraging ecologically

sustainable activities in communities living alongside macaque populations to avoid potential conflict over resources, and environmental education projects aimed at raising awareness of the ecological importance of moor macaques and the threats faced by their populations. Special attention should be paid to isolated patches of forest surrounding the National Park, such as Bontobahari forest, which could be connected to the Southern part of the National Park through the implementation of forest corridors and reforestation projects. Moreover, a complete population survey focusing on the impact of different anthropogenic activities on the density, distribution, and demography of the moor macaques at a landscape scale is urgently needed (Lee *et al.*, 2020; Supriatna, 2019). As the geographic range of the species covers the complete region of South Sulawesi (Lee *et al.*, 2020), surveys should aim to identify remaining suitable habitat across the region and priority areas for their conservation.

**Acknowledgments** The authors warmly thank Filippo Aureli for supporting our research. We are extremely grateful to the local people and authorities in Camba, Bontobahari, Tinggimoncog, Kahayya, Ko'mara and Parangloe, who helped us extensively with their knowledge and kindness during data collection. We thank the Kementarian Negara Riset dan Teknologi Republik Indonesia (RISTEK) for their permission to conduct research in Indonesia (Research permit: 338/E5/E5.4/SIP/2019), and the Kantor Balai Besar Konservasi Sumber Daya Alam Sulawesi Selatan (BKSDA SULSEL) for their help and work on wildlife conservation in South Sulawesi. We are most grateful to our research assistants Jose Luis Gómez-Melara, Clara Hernández-Tienda, and Elisa Gregorio-Hernández for their help and support during data collection. We are extremely grateful to the Editor, Professor Setchell, and two anonymous reviewers for very useful and detailed comments on earlier drafts that have helped improve our manuscript. Finally, we thank the Primate Society of Great Britain (PSGB) for supporting our project with the Ardith Eudey Grant for Conservation 2019, and Professor John Oates for his immense help on the project and dedication to the conservation of Asian primates.

**Author Contributions** BM, FA, and VBF conceived and designed the study. VBF conducted fieldwork. VBF, DS, BM, and FA analysed the data. All co-authors wrote the manuscript.

**Funding** This study was partially funded by the Primate Society of Great Britain (Ardith Eudey Grant for Conservation 2019).

**Open Access** This article is licensed under a Creative Commons Attribution 4.0 International License, which permits use, sharing, adaptation, distribution and reproduction in any medium or format, as long as you give appropriate credit to the original author(s) and the source, provide a link to the Creative Commons licence, and indicate if changes were made. The images or other third party material in this article are included in the article's Creative Commons licence, unless indicated otherwise in a credit line to the material. If material is not included in the article's Creative Commons licence and your intended use is not permitted by statutory regulation or exceeds the permitted use, you will need to obtain permission directly from the copyright holder. To view a copy of this licence, visit <http://creativecommons.org/licenses/by/4.0/>.

## References

- Ahmed, T., Bargali, H. S., Verma, N., & Khan, A. (2021). Mammals outside protected areas: Status and response to anthropogenic disturbance in Western Terai-Arc landscape. *Proceedings of the Zoological Society (Calcutta)*, 74, 163–170. <https://doi.org/10.1007/s12595-020-00360-4>.
- Albani, A., Cutini, M., Germani, L., et al (2020). Activity budget, home range, and habitat use of moor macaques (*Macaca maura*) in the karst forest of South Sulawesi, Indonesia. *Primates*, 61, 673–684. <https://doi.org/10.1007/s10329-020-00811-8>.

- Allredge, M. W., Pollock, K. H., Simons, T. R., & Shriner, S. A. (2007). Multiple-species analysis of point count data: a more parsimonious modelling framework. *Journal of Applied Ecology*, *44*, 281–290. <https://doi.org/10.1111/j.1365-2664.2006.01271.x>.
- Amano, N., Wang, Y. V., Boivin, N., & Roberts, P. (2021). ‘Emptying forests?’ Conservation implications of past human–primate interactions. *Trends in Ecology & Evolution*, *36*(4), 345–359. <https://doi.org/10.1016/j.tree.2020.12.004>
- Amici, F., Widdig, A., MacIntosh, A. J. J., et al (2020). Dominance style only partially predicts differences in neophobia and social tolerance over food in four macaque species. *Scientific Reports*, *10*, 22069. <https://doi.org/10.1038/s41598-020-79246-6>.
- Anderson, E., & Mammides, C. (2020). The role of protected areas in mitigating human impact in the world’s last wilderness areas. *Ambio*, *49*, 434–441. <https://doi.org/10.1007/s13280-019-01213-x>.
- Arroyo-Rodríguez, V., & Fahrig, L. (2014). Why is a landscape perspective important in studies of primates? *American Journal of Primatology*, *76*, 901–909. <https://doi.org/10.1002/ajp.22282>.
- Beltrán Francés, V., Castellano-Navarro, A., Illa Maulany, R., et al (2020). Play behavior in immature moor macaques (*Macaca maura*) and Japanese macaques (*Macaca fuscata*). *American Journal of Primatology*, *82*, e23192. <https://doi.org/10.1002/ajp.23192>.
- Bersacola, E., Hill, C.M. & Hockings, K.J. (2021). Chimpanzees balance resources and risk in an anthropogenic landscape of fear. *Sci Rep*, *11*, 4569. <https://doi.org/10.1038/s41598-021-83852-3>
- Bolker, B. M., Brooks, M. E., Clark, C. J., Geange, S. W., Poulsen, J. R., Stevens, M. H. H., & White, J.-S. S. (2009). Generalized linear mixed models: a practical guide for ecology and evolution. *Trends in Ecology & Evolution*, *24*, 127–135. <https://doi.org/10.1016/j.tree.2008.10.008>.
- Borgerson, C. (2015). The effects of illegal hunting and habitat on two sympatric endangered primates. *International Journal of Primatology*, *36*, 74–93. <https://doi.org/10.1007/s10764-015-9812-x>.
- Boyle, S. A., & Smith, A. T. (2010). Can landscape and species characteristics predict primate presence in forest fragments in the Brazilian Amazon?. *Biological Conservation*, *143*(5), 1134–1143. <https://doi.org/10.1016/j.biocon.2010.02.008>
- Brambach, F., Leuschner, C., Tjoa, A., & Culmsee, H. (2017). Diversity, endemism, and composition of tropical mountain forest communities in Sulawesi, Indonesia, in relation to elevation and soil properties. *Perspectives in Plant Ecology, Evolution and Systematics*, *27*, 68–79. <https://doi.org/10.1016/j.ppees.2017.06.003>.
- Brooks, M., Kristensen, K., van Benthem, K., et al (2017). GlimmTMB balances speed and flexibility among packages for zero-inflated generalized linear mixed modelling. *The R Journal*, *9*(2), 378–400. <https://doi.org/10.32614/RJ-2017-066>.
- Buckland, S. T., Anderson, D. R., Burnham, K. P., Laake, J. L., Borchers, D. L., & Thomas, L. (2001). *Introduction to distance sampling: estimating abundance of biological populations*. Oxford University Press.
- Buckland, S. T., Plumptre, A. J., Thomas, L., & Rexstad, E. A. (2010). Design and analysis of line transect surveys for primates. *International Journal of Primatology*, *31*(5), 833–847. <https://doi.org/10.1007/s10764-010-9431-5>
- Buckland, S. T., Rexstad, E. A., Marques, T. A., & Oedekoven, C. S. (2015). *Distance sampling: Methods and applications*. Springer.
- Butynski, T. M. (1990). Comparative Ecology of blue monkeys (*Cercopithecus mitis*) in high- and low-density subpopulations. *Ecological Monographs*, *60*(1), 1–26. <https://doi.org/10.2307/1943024>.
- Campbell, G., Head, J., Junker, J., & Nekaris, K. A. I. (2016). Primate abundance and distribution: background concepts and methods. In S. A. Wich & A. J. Marshall (Eds.), *An introduction to primate conservation* (pp. 143–156). Oxford University Press.
- Campbell, K., Martyr, D., Risdianto, D., & Clemente, C. J. (2019). Two species, one snare: Analysing snare usage and the impacts of tiger poaching on a non-target species, the Malayan tapir. *Biological Conservation*, *231*, 161–166.
- Campbell-Smith, G., Simanjorang, H. V., Leader-Williams, N., & Linkie, M. (2010). Local attitudes and perceptions toward crop-raiding by orangutans (*Pongo abelii*) and other nonhuman primates in northern Sumatra, Indonesia. *American Journal of Primatology*, *72*, 866–876. <https://doi.org/10.1002/ajp.20822>.
- Campbell-Smith, G., Campbell-Smith, M., Singleton, I., & Linkie, M. (2011). Raiders of the lost bark: Orangutan foraging strategies in a degraded landscape. *PLoS One*, *6*(6), e20962. <https://doi.org/10.1371/journal.pone.0020962>.

- Campos, F. A., Morris, W. F., Alberts, S. C., et al (2017). Does climate variability influence the demography of wild primates? Evidence from long-term life-history data in seven species. *Global Change Biology*, 23, 4907–4921. <https://doi.org/10.1111/gcb.13754>.
- Caro, T., Darwin, J., Forrester, T., Ledoux-Bloom, C., & Wells, C. (2012). Conservation in the Anthropocene. *Conservation Biology*, 26(1), 185–188. <https://doi.org/10.1111/j.1523-1739.2011.01752.x>.
- Chapman, C. A., Bortolamiol, S., Matsuda, I., et al (2018). Primate population dynamics: variation in abundance over space and time. *Biodiversity and Conservation*, 27, 1221–1238. <https://doi.org/10.1007/s10531-017-1489-3>.
- Díaz, S. M., Settele, J., Brondízio, E., et al (2019). *The global assessment report on biodiversity and ecosystem services: Summary for policy makers* (Vol. 56). Intergovernmental Science-Policy Platform on Biodiversity and Ecosystem Services.
- Dirzo, R., Young, H. S., Galetti, M., Ceballos, G., Isaac, N. J., & Collen, B. (2014). Defaunation in the Anthropocene. *Science*, 345(6195), 401–406. <https://doi.org/10.1126/science.1251817>
- Elias, F., Ferreira, J., Lennox, G. D., et al (2020). Assessing the growth and climate sensitivity of secondary forests in highly deforested Amazonian landscapes. *Ecology*, 101(3), e02954. <https://doi.org/10.1002/ecy.2954>.
- Estrada, A., Raboy, B. E., & Oliveira, L. C. (2012). Agroecosystems and primate conservation in the tropics: A review. *American Journal of Primatology*, 74, 696–711. <https://doi.org/10.1002/ajp.22033>.
- Estrada, A., Garber, P. A., Rylands, A. B., et al (2017). Impending extinction crisis of the world's primates: Why primates matter. *Science Advances*, 3(1), e1600946. <https://doi.org/10.1126/sciadv.1600946>.
- Estrada, A., Garber, P. A., Mittermeier, R. A., et al (2018). Primates in peril: the significance of Brazil, Madagascar, Indonesia and the Democratic Republic of the Congo for global primate conservation. *PeerJ*, 6, e4869. <https://doi.org/10.7717/peerj.4869>.
- Evans, B. J., Supriatna, J., Andayani, N., Setiadi, M. I., Cannatella, D. C., & Melnick, D. J. (2003). Monkeys and toads define areas of endemism on Sulawesi. *Evolution*, 57(6), 1436–1443. <https://doi.org/10.1111/j.0014-3820.2003.tb00350.x>.
- Fa, J. H., & Tagg, N. (2016). Hunting and primate conservation. In S. A. Wich & A. J. Marshall (Eds.), *An introduction to primate conservation* (pp. 143–156). Oxford University Press.
- Fa, J. E., & Yuste, J. G. (2001). Commercial bushmeat hunting in the Monte Mitra forests, Equatorial Guinea: extent and impact. *Animal Biodiversity and Conservation*, 24(1), 31–52.
- Field, A. P. (2005). *Discovering statistics using SPSS*. 2nd Edition, Sage Publications, London
- Figel, J. J., Hambal, M., Krisna, I., Putra, R., & Yansyah, D. (2021). Malignant Snare Traps Threaten an Irreplaceable Megafauna Community. *Tropical Conservation Science*. <https://doi.org/10.1177/1940082921989187>.
- Forstmeier, W., & Schielzeth, H. (2011). Cryptic multiple hypotheses testing in linear models: overestimated effect sizes and the winner's curse. *Behavioral Ecology and Sociobiology*, 65(1), 47–55. <https://doi.org/10.1007/s00265-010-1038-5>.
- Fotang, C., Bröring, U., Roos, C., et al (2021). Human activity and forest degradation threaten populations of the Nigeria–Cameroon chimpanzee (*Pan troglodytes ellioti*) in Western Cameroon. *International Journal of Primatology*, 42, 105–129. <https://doi.org/10.1007/s10764-020-00191-2>.
- Galán-Acedo, C., Arroyo-Rodríguez, V., Cudney-Valenzuela, S. J., & Fahrig, L. (2019). A global assessment of primate responses to landscape structure. *Biological Reviews*, 94(5), 1605–1618.
- Garber, P. A., McKenney, A., Bartling-John, E., et al (2020). Life in a harsh environment: the effects of age, sex, reproductive condition, and season on hair cortisol concentration in a wild non-human primate. *PeerJ*, 8, e9365. <https://doi.org/10.7717/peerj.9365>.
- Gomez-Melara, J. L., Acosta-Naranjo, R., Castellano-Navarro, A., et al (2021). Dominance style predicts differences in food retrieval strategies. *Scientific Reports*, 11, 2726. <https://doi.org/10.1038/s41598-021-82198-0>.
- Graham, T. L., Matthews, H. D., & Turner, S. E. (2016). A global-scale evaluation of primate exposure and vulnerability to climate change. *International Journal of Primatology*, 37, 158–174. <https://doi.org/10.1007/s10764-016-9890-4>.
- Gray, C., Hill, S., Newbold, T., et al (2016). Local biodiversity is higher inside than outside terrestrial protected areas worldwide. *Nature Communications*, 7, 12306. <https://doi.org/10.1038/ncomms12306>.
- Gray, T. N. E., Hughes, A. C., Laurance, W. F., et al (2018). The wildlife snaring crisis: an insidious and pervasive threat to biodiversity in Southeast Asia. *Biodiversity and Conservation*, 27, 1031–1037. <https://doi.org/10.1007/s10531-017-1450-5>.

- Halpern, B. S., Walbridge, S., Selkoe, K. A., et al (2008). A global map of human impact on marine ecosystems. *Science*, 319(5865), 948–952. <https://doi.org/10.1126/science.1149345>
- Hansen, M. C., Potapov, P. V., Moore, R., et al (2013). High-resolution global maps of 21st-century forest cover change. *Science*, 342(6160), 850–853. <https://doi.org/10.1126/science.1244693>
- Hanson, K. T., & Riley, E. P. (2018). Beyond neutrality: The human–primate interface during the habituation process. *International Journal of Primatology*, 39(5), 852–877. <https://doi.org/10.1007/s10764-017-0009-3>
- Harcourt, A. (1995). Population viability estimates: Theory and practice for a wild gorilla population. *Conservation Biology*, 9, 134–142. <https://doi.org/10.1046/j.1523-1739.1995.09030.x>
- Hartig, F. (2021). DHARMA: Residual Diagnostics for Hierarchical (Multi-Level / Mixed) Regression Models. R package version 0.4.3. <http://florianhartig.github.io/DHARMA>. Accessed March 2021
- Healey, R. M., Atutubo, J. R., Kusrini, M. D., Howard, L., Page, F., Hallisey, N., & Karraker, N. E. (2020). Road mortality threatens endemic species in a national park in Sulawesi, Indonesia. *Global Ecology and Conservation*, 24, e01281. <https://doi.org/10.1016/j.gecco.2020.e01281>.
- Hernández Tienda, C., Beltrán Francés, V., Majolo, B., et al (2021). Reaction to Snakes in Wild Moor Macaques (*Macaca maura*). *International Journal of Primatology*, 42, 528–532. <https://doi.org/10.1007/s10764-021-00230-6>.
- Higgitt, R. L., Van Schalkwyk, O. L., de Klerk-Lorist, L. M., et al (2019). Mycobacterium bovis Infection in African Wild Dogs, Kruger National Park, South Africa. *Emerging Infectious Diseases*, 25(7), 1425–1427. <https://doi.org/10.3201/eid2507.181653>.
- IUCN/SSC (2019). *The International Union for Conservation of Nature/Species Survival Commission Primate Specialist Group: An Assessment of Endangered Primates*. Gland, Switzerland
- Johnson, N., Aréchiga-Ceballos, N., & Aguilar-Setien, A. (2014). Vampire bat rabies: ecology, epidemiology and control. *Viruses*, 6, 1911–1928. <https://doi.org/10.3390/v6051911>.
- Jones, B. A., Grace, D., Kock, R., et al (2013). Zoonosis emergence linked to agricultural intensification and environmental change. *Proceedings of the National Academy of Sciences*, 110, 8399–8404. <https://doi.org/10.1073/pnas.1208059110>.
- Jori, F., Hernandez-Jover, M., Magouras, I., Dürr, S., & Brookes, V. J. (2021). Wildlife-livestock interactions in animal production systems: what are the biosecurity and health implications? *Animal Frontiers*, 11(5), 8–19. <https://doi.org/10.1093/af/vfab045>.
- Junker, J., Petrovan, S. O., Arroyo-Rodríguez, V., et al (2020). A severe lack of evidence limits effective conservation of the world's primates. *BioScience*, 70(9), 794–803.
- Kelley, L. C. (2018). The politics of uneven smallholder cacao expansion: A critical physical geography of agricultural transformation in Southeast Sulawesi, Indonesia. *Geoforum*, 97, 22–34. <https://doi.org/10.1016/j.geoforum.2018.10.006>.
- Kiffner, C., Kioko, J., Baylis, J., et al (2020). Long-term persistence of wildlife populations in a pastoral area. *Ecology and Evolution*, 10, 10000–10016. <https://doi.org/10.1002/ece3.6658>.
- Kirkpatrick, L., Maher, S. J., Lopez, Z., Lintott, P. R., Bailey, S. A., Dent, D., & Park, K. J. (2017). Bat use of commercial coniferous plantations at multiple spatial scales: Management and conservation implications. *Biological Conservation*, 206, 1–10. <https://doi.org/10.1016/j.biocon.2016.11.018>.
- Kuhl, H., Maisels, F., Ancrenaz, M., & Williamson, E. A. (2008). Best Practice Guidelines for Surveys and Monitoring of Great Ape Populations.
- Kumar, V., & Sankhyan, V. (2021). Musculoskeletal injuries: prevalence and severity in free-range rhesus macaques (*Macaca mulatta*) of Himalayan Shivalik Hills, Northern India. *Biological Rhythm Research*, 52(7), 1044–1054.
- Labahi, A. (2010). *Kepadatan populasi dan perilaku penyerangan monyet dare (Macaca maura), pada tanaman pertanian di hutan pendididakan dan pelatihan Tabo-Tabo, Kabupaten Pangkep, Propinsi Sulawesi Selatan, Kehutana, Konservasi Sumber Daya Hutan*. Thesis, Universitas Gadjah Mada. Yogyakarta.
- Latinne, A., Saputro, S., Kalengkongan, J., et al (2020). Characterizing and quantifying the wildlife trade network in Sulawesi, Indonesia. *Global Ecology and Conservation*, 21, e00887.
- Lee, T. M., Sodhi, N. S., & Prawiradilaga, D. M. (2007). The importance of protected areas for the forest and endemic avifauna of Sulawesi (Indonesia). *Ecological Applications*, 17, 1727–1741. <https://doi.org/10.1890/06-1256.1>.
- Lee, R., Riley, E., Sangermano, F., Cannon, C. & Shekelle, M. (2020). *Macaca maura*. The IUCN Red List of Threatened Species 2020: e.T12553A197831931. <https://dx.doi.org/10.2305/IUCN.UK.2020-3.RLTS.T12553A197831931.en>. Accessed 09 February 2021

- Lewis, S. L., Edwards, D. P., & Galbraith, D. (2015). Increasing human dominance of tropical forests. *Science*, 349(6250), 827–832. <https://doi.org/10.1126/science.aaa9932>.
- Li, Z., & Rogers, M. E. (2005). Are limestone hills a refuge or essential habitat for white-headed langurs in Fusui, China? *International Journal of Primatology*, 26, 437–452. <https://doi.org/10.1007/s10764-005-2932-y>.
- Luskin, M. S., Meijaard, E., Surya, S., Walzer, C., & Linkie, M. (2021). African Swine Fever threatens Southeast Asia's 11 endemic wild pig species. *Conservation Letters*, 14(3), e12784.
- Malik, A., Fensholt, R., & Mertz, O. (2015). Mangrove exploitation effects on biodiversity and ecosystem services. *Biodiversity and Conservation*, 24, 3543–3557. <https://doi.org/10.1007/s10531-015-1015-4>.
- Marsh, L. K., & Chapman, C. A. (2013). *Primates in fragments*. Springer
- Marshall, A. R., Lovett, J. C., & White, P. C. (2008). Selection of line-transect methods for estimating the density of group-living animals: lessons from the primates. *American Journal of Primatology*, 70, 452–462. <https://doi.org/10.1002/ajp.20516>.
- Marques, T. A., Buckland, S. T., Borchers, D. L., Rexstad, E. G., & Thomas, L. (2011). Distance Sampling. *International Encyclopedia of Statistical Science*, 1, 398–400.
- Meijaard, E., & Nijman, V. (2000). The local extinction of the proboscis monkey *Nasalis larvatus* in Pulau Kaget Nature Reserve, Indonesia. *Oryx*, 34(1), 66–70. <https://doi.org/10.1046/j.1365-3008.2000.00095.x>.
- Milda, D., Ramesh, T., Kalle, R., Gayathri, V., & Thanikodi, M. (2020). Ranger survey reveals conservation issues across Protected and outside Protected Areas in southern India. *Global Ecology and Conservation*, 24, e01256.
- Morrow, K. S., Glanz, H., Ngakan, P. O., & Riley, E. P. (2019). Interactions with humans are jointly influenced by life history stage and social network factors and reduce group cohesion in moor macaques (*Macaca maura*). *Scientific Reports*, 9, 20162. <https://doi.org/10.1038/s41598-019-56288-z>.
- Munn, J. (2006). Effects of Injury on the Locomotion of Free-Living Chimpanzees in the Budongo Forest Reserve, Uganda. In N. E. Newton-Fisher, H. Notman, J. D. Paterson, & V. Reynolds (Eds.), *Primates of Western Uganda. Developments in Primatology: Progress and Prospects*. Springer. [https://doi.org/10.1007/978-0-387-33505-6\\_15](https://doi.org/10.1007/978-0-387-33505-6_15).
- Mwenja, I. (2007). A new population of De Brazza's monkey in Kenya. *Primate Conservation*, 22(1), 117–122. <https://doi.org/10.1896/052.022.0111>.
- Nekaris, K. A. I., Poindexter, S., Reinhardt, K. D., et al (2017). Coexistence between Javan Slow Lorises (*Nycticebus javanicus*) and Humans in a Dynamic Agroforestry Landscape in West Java, Indonesia. *International Journal of Primatology*, 38, 303–320. <https://doi.org/10.1007/s10764-017-9960-2>.
- Okamoto, K., Matsumura, S., & Watanabe, K. (2000). Life history and demography of wild moor macaques (*Macaca maurus*): Summary of ten years of observations. *American Journal of Primatology*, 52, 1–11. [https://doi.org/10.1002/1098-2345\(200009\)52:1<1::AID-AJP1>3.0.CO;2-F](https://doi.org/10.1002/1098-2345(200009)52:1<1::AID-AJP1>3.0.CO;2-F).
- Parmesan, C., & Yohe, G. (2003). A globally coherent fingerprint of climate change impacts across natural systems. *Nature*, 421(6918), 37–42. <https://doi.org/10.1038/nature01286>
- Phalan, B., Bertzky, M., Butchart, S. H., Donald, P. F., Scharlemann, J. P., Stattersfield, A. J., & Balmford, A. (2013). Crop expansion and conservation priorities in tropical countries. *PloS One*, 8(1), e51759. <https://doi.org/10.1371/journal.pone.0051759>
- Plumptre, A. J., & Reynolds, V. (1994). The effect of selective logging on the primate populations in the Budongo Forest Reserve, Uganda. *Journal of Applied Ecology*, 31(4), 631–641. <https://doi.org/10.2307/2404154>.
- Plumptre, A. J., Baisero, D., Belote, R. T., et al (2021). Where might we find ecologically intact communities?. *Frontiers in Forests and Global Change*, 4, 26. <https://doi.org/10.3389/ffgc.2021.626635>
- Quiatt, D., Reynolds, V., & Stokes, E. J. (2002). Snare injuries to chimpanzees (*Pan troglodytes*) at 10 study sites in east and west Africa. *African Journal of Ecology*, 40, 303–305. <https://doi.org/10.1046/j.1365-2028.2002.00356.x>.
- R Development Core Team. (2013). *R: A language and environment for statistical computing*. Version 3.5.2. R Foundation for Statistical Computing, Vienna, Austria. <http://www.R-project.org>
- Riley, E. P. (2010). The endemic seven: Four decades of research on the Sulawesi macaques. *Evolutionary Anthropology*, 19, 22–36. <https://doi.org/10.1002/evan.20246>.
- Riley, E. P., & Priston, N. E. (2010). Macaques in farms and folklore: exploring the human–nonhuman primate interface in Sulawesi, Indonesia. *American Journal of Primatology*, 72, 848–854. <https://doi.org/10.1002/ajp.20798>.

- Riley, E. P., Sagnotti, C., Carosi, M., & Oka, N. P. (2014). Socially tolerant relationships among wild male moor macaques (*Macaca maura*). *Behaviour*, *151*, 1021–1044. <https://doi.org/10.1163/1568539X-00003182>.
- Riley, E. P., MacKinnon, K. C., Fernandez-Duque, E., Setchell, J. M., Garber, P. A. (2014). Code of best practices for field primatology. *Resour. doc., Int. Primatol. Soc., Am. Soc. Primatol.* [https://www.asp.org/resources/docs/Code%20of\\_Best\\_Practices%20Oct%202014.pdf](https://www.asp.org/resources/docs/Code%20of_Best_Practices%20Oct%202014.pdf)
- Riley, E. P., Shaffer, C. A., Trinidad, J. S., et al (2021). Roadside monkeys: Anthropogenic effects on moor macaque (*Macaca maura*) ranging behavior in Bantimurung Bulusaraung National Park, Sulawesi, Indonesia. *Primates*, *62*, 477–489. <https://doi.org/10.1007/s10329-021-00899-6>.
- Rosenbaum, B., O'Brien, T. G., Kinnaird, M., & Supriatna, J. (1998). Population densities of Sulawesi crested black macaques (*Macaca nigra*) on Bacan and Sulawesi, Indonesia: Effects of habitat disturbance and hunting. *American Journal of Primatology*, *44*(2), 89–106. [https://doi.org/10.1002/\(SICI\)1098-2345\(1998\)44:2<89::AID-AJP1>3.0.CO;2-S](https://doi.org/10.1002/(SICI)1098-2345(1998)44:2<89::AID-AJP1>3.0.CO;2-S).
- Sha, J. C. M., Gumert, M. D., Lee, B. P. Y. H., et al (2009). Status of the long-tailed macaque *Macaca fascicularis* in Singapore and implications for management. *Biodiversity and Conservation*, *18*, 2909–2926. <https://doi.org/10.1007/s10531-009-9616-4>.
- Sih, A. (2013). Understanding variation in behavioural responses to human-induced rapid environmental change: a conceptual overview. *Animal Behaviour*, *85*(5), 1077–1088. <https://doi.org/10.1016/j.anbehav.2013.02.017>
- Southwick, C. H., & Cadigan, F. C. (1972). Population studies of Malaysian primates. *Primates*, *13*(1), 1–18.
- Spaan, D., Ramos-Fernández, G., Schaffner, C. M., et al (2019). Standardizing methods to estimate population density: an example based on habituated and unhabituated spider monkeys. *Biodiversity and Conservation*, *28*, 847–862. <https://doi.org/10.1007/s10531-018-01696-2>.
- Spaan, D., Ramos-Fernández, G., Bonilla-Moheno, M., et al (2020). Anthropogenic habitat disturbance and food availability affect the abundance of an endangered primate: a regional approach. *Mammalian Biology*, *100*, 325–333. <https://doi.org/10.1007/s42991-020-00025-x>.
- Stewart, B. M., Turner, S. E., & Matthews, H. D. (2020). Climate change impacts on potential future ranges of non-human primate species. *Climatic Change*, *162*, 2301–2318. <https://doi.org/10.1007/s10584-020-02776-5>.
- Stokes, E. J., Strindberg, S., Bakabana, P. C., et al (2010). Monitoring great ape and elephant abundance at large spatial scales: measuring effectiveness of a conservation landscape. *PLoS One*, *5*(4), e10294. <https://doi.org/10.1371/journal.pone.0010294>.
- Struhsaker, T., & Eisenberg, J. (1981). *Techniques for the study of primate population ecology*. National Academy Press.
- Supriatna, J. (2019). *Field guide to the primates of Indonesia*. Yayasan Pustaka Obor.
- Supriatna, J., Froehlich, J. W., Erwin, J., & Southwick, C. (1992). Population, habitat and conservation status of *Macaca maurus*, *Macaca tonkeana* and their putative hybrids. *Tropical Biodiversity*, *1*(1), 31–48.
- Supriatna, J., Shekelle, M. & Burton, J. (2008). *Macaca maura*. In: *The IUCN Red List of Threatened Species. Version 2014.3*. Available at: [www.iucnredlist.org](http://www.iucnredlist.org). Accessed 11 February 2021
- Supriatna, J., Winarni, N., & Dwiyaheni, A. A. (2015). Primates of Sulawesi: an update on habitat, distribution, population and conservation. *Taprobanica*, *7*(3), 170.
- Supriatna, J., Shekelle, M., Fuad, H. A., et al (2020). Deforestation on the Indonesian island of Sulawesi and the loss of primate habitat. *Global Ecol Conserv*, *24*, e01205.
- Thomas, L., Buckland, S. T., Rexstad, E. A., et al (2010). Distance software: Design and analysis of distance sampling surveys for estimating population size. *Journal of Applied Ecology*, *47*, 5–14. <https://doi.org/10.1111/j.1365-2664.2009.01737.x>.
- Valente, A. M., Marques, T. A., Fonseca, C., & Torres, R. T. (2016). A new insight for monitoring ungulates: density surface modelling of roe deer in a Mediterranean habitat. *European Journal of Wildlife Research*, *62*(5), 577–587. <https://doi.org/10.1007/s10344-016-1030-0>
- van Schaik, C. P., & Brockman, D. K. (2005). Seasonality in primate ecology, reproduction, and life history. In D. K. Brockman & C. P. van Schaik (Eds.), *Seasonality in primates: Studies of living and extinct human and non-human primates* (pp. 3–20). University Press.
- Waller, J. C., & Reynolds, V. (2001). Limb injuries resulting from snares and traps in chimpanzees (*Pan troglodytes schweinfurthii*) of the Budongo Forest, Uganda. *Primates*, *42*(2), 135–139. <https://doi.org/10.1007/BF02558140>.

- Waluyo, H., Sadikin, S. R., & Gustami & Whiting, P. (2005). An economic valuation of biodiversity in the karst area of Maros, south Sulawesi, Indonesia. *Biodiversity*, 6(2), 24–26. <https://doi.org/10.1080/14888386.2005.9712763>.
- Waterman, J.O. (2021). Within-group consequences of the erisk and occurrence of between-group conflict in crested macaques (*Macaca nigra*). Unpublished PhD thesis, Liverpool John Moores University.
- Whitten, T., & Henderson, G. S. (2012). *Ecology of Sulawesi*. Tuttle Publishing.
- Wich, S. A., & Marshall, A. J. (2016). *An introduction to primate conservation*. Oxford University Press.
- Wilson, C. C., & Wilson, W. L. (1975). Methods censusing forest-dwelling primates. In S. Kondo, M. Kawai, & E. Ehara (Eds.), *Contemporary Primatology* (pp. 345–350). Karger.
- Worman, C. O. D., & Chapman, C. A. (2006). Densities of two frugivorous primates with respect to forest and fragment tree species composition and fruit availability. *International Journal of Primatology*, 27, 203–225. <https://doi.org/10.1007/s10764-005-9007-y>.
- Yersin, H., Asimwe, C., Voordouw, M. J., et al (2017). Impact of Snare Injuries on Parasite Prevalence in Wild Chimpanzees (*Pan troglodytes*). *International Journal of Primatology*, 38, 21–30. <https://doi.org/10.1007/s10764-016-9941-x>.
- Zak, A. A., & Riley, E. P. (2017). Comparing the use of camera traps and farmer reports to study crop feeding behavior of moor macaques (*Macaca maura*). *International Journal of Primatology*, 38(2), 224–242. <https://doi.org/10.1007/s10764-016-9945-6>

## Authors and Affiliations

Víctor Beltrán Francés<sup>1</sup> · Denise Spaan<sup>2</sup> · Federica Amici<sup>3,4</sup> ·  
Risma Illa Maulany<sup>5</sup> · Ngakan Putu Oka<sup>5</sup> · Bonaventura Majolo<sup>6</sup> 

✉ Bonaventura Majolo  
bmajolo@lincoln.ac.uk

<sup>1</sup> Fundació Universitat de Girona, Innovació i Formació, Girona, Spain

<sup>2</sup> Instituto de Neuroetología, Universidad Veracruzana, Xalapa, Veracruz, Mexico

<sup>3</sup> Behavioral Ecology Research Group, Institute of Biology, Faculty of Life Science, University of Leipzig, Leipzig, Germany

<sup>4</sup> Department of Human Behavior, Ecology and Culture, Research Group Primate Behavioural Ecology, Max-Planck Institute for Evolutionary Anthropology, Leipzig, Germany

<sup>5</sup> Forestry Department, Hasanuddin University, Makassar, Sulawesi, Indonesia

<sup>6</sup> School of Psychology, University of Lincoln, Lincoln, UK



# International Journal of Primatology

The Official Journal of the International Primatological Society

[Journal home](#) > [Volumes and issues](#) > Volume 43, issue 2

Search within journal

## Volume 43, issue 2, April 2022

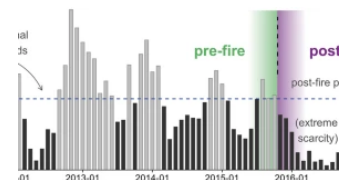
10 articles in this issue

[After the smoke has cleared: Extended low fruit productivity following forest fires decreased gregariousness and social tolerance among wild female Bornean orangutans \(\*Pongo pygmaeus wurmbii\*\)](#)

Alison M. Ashbury, Jade Meric de Bellefon ... Maria A. van Noordwijk

OriginalPaper | [Open Access](#) |

Published: 20 December 2021 | Pages: 189 - 215

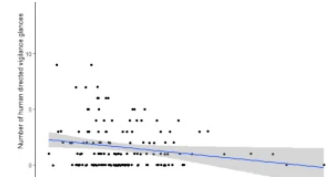


## [Observer effects in a remote population of large-headed capuchins, \*Sapajus macrocephalus\*](#)

Chloë Alexia Metcalfe, Alfredo Yhuaraqui Yaicurima & Sarah Papworth

OriginalPaper | [Open Access](#) |

Published: 06 December 2021 | Pages: 216 - 234

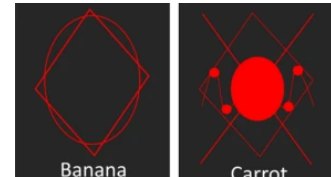


## [Evidence of psychological essentialism in a symbol-trained bonobo \(\*Pan paniscus\*\)](#)

Robert Lurz, Carla Krachun ... Jared Tagliatalata

OriginalPaper | Published: 19 February 2022 |

Pages: 235 - 252

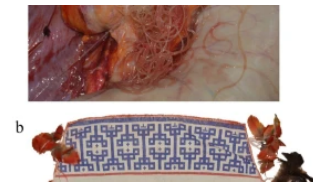


## ["Spider Monkey Cotton": Bridging Waiwai and Scientific Ontologies to Characterize Spider Monkey \(\*Ateles paniscus\*\) Filariasis in the Konashen Community Owned Conservation Area, Guyana](#)

Christopher A. Shaffer, Marissa S. Milstein ... Peter A. Larsen

OriginalPaper | Published: 12 January 2022 |

Pages: 253 - 272



## [Using a Phylogenetic Framework to Assess the Role of Fruit Size in Food Selection by the Andean Night Monkey \(\*Aotus lemurinus\*\)](#)

Alex Mauricio Mopán-Chilito, Sebastián O. Montilla ... John F. Aristizabal

OriginalPaper | Published: 21 January 2022 |

Pages: 273 - 290

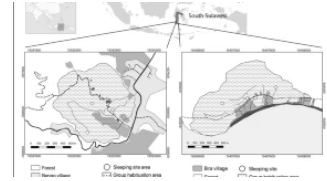


## [The Habituation Process in Two Groups of Wild Moor Macaques \(\*Macaca maura\*\)](#)

Clara Hernández Tienda, Bonaventura Majolo ... Federica Amici

OriginalPaper | [Open Access](#) |

Published: 14 January 2022 | Pages: 291 - 316



## [A Reassessment of the Population Size, Demography, and Status of Tanzania's Endemic Kipunji \*Rungwecebus kipunji\* 13 Years on: Demonstrating Conservation Success](#)

Tim R. B. Davenport, Sophy J. Machaga ... Pascal M. Makumbule

OriginalPaper | Published: 09 February 2022 |

Pages: 317 - 338

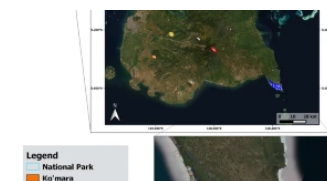


## [Effect of Anthropogenic Activities on the Population of Moor Macaques \(\*Macaca maura\*\) in South Sulawesi, Indonesia](#)

Víctor Beltrán Francés, Denise Spaan ... Bonaventura Majolo

OriginalPaper | [Open Access](#) |

Published: 22 February 2022 | Pages: 339 - 359

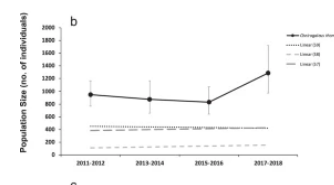


## [Correction to: Population Dynamics of Nocturnal Lemurs in Littoral Forest Fragments: The Importance of Long-Term Monitoring](#)

Sam Hyde Roberts, Retsiraiky J. Rossizela ... Giuseppe Donati

Correction | Published: 03 January 2022 |

Pages: 360 - 362



## [Correction to: Cold Discomfort: A Model to Explain Repetitive Linear Enamel Hypoplasia Among \*Pan troglodytes\* and \*Pan paniscus\*](#)

Mark F. Skinner

Correction | Published: 06 January 2022 | Pages: 363 - 363

### For authors

---

[Submission guidelines](#)

[Manuscript editing services](#)

[Ethics & disclosures](#)

[Open Access fees and funding](#)

[Contact the journal](#)

[Submit manuscript](#)

### Working on a manuscript?



Avoid the most common mistakes and prepare your manuscript for journal editors.

[Learn more](#) →

### Explore

---

[Online first articles](#)

[Volumes and issues](#)

[Sign up for alerts](#)

Not logged in - 182.1.170.118

Not affiliated

**SPRINGER NATURE**

© 2023 Springer Nature Switzerland AG. Part of [Springer Nature](#).

# 37\_Maulany\_Beltr\_n\_Franc\_s\_2 022.pdf

*by*

---

**Submission date:** 01-Oct-2022 10:56AM (UTC+0700)

**Submission ID:** 1913566342

**File name:** 37\_Maulany\_Beltr\_n\_Franc\_s\_2022.pdf (1.57M)

**Word count:** 11190

**Character count:** 60747



# 1 Effect of Anthropogenic Activities on the Population of Moor Macaques (*Macaca maura*) in South Sulawesi, Indonesia

Víctor Beltrán Francés<sup>1</sup> · Denise Spaan<sup>2</sup> · Federica Amici<sup>3,4</sup> · Risma Illa Maulany<sup>5</sup> · Ngakan Putu Oka<sup>5</sup> · Bonaventura Majolo<sup>6</sup> 

Received: 11 August 2021 / Accepted: 19 January 2022  
© The Author(s) 2022

## 1 Abstract

Forest loss due to anthropogenic activities is one of the main causes of plant and animal species decline. Studying the species' population status (i.e., density, abundance, and geographic distribution) on a regular basis is one of the main tools to assess the effect of anthropogenic activities on wildlife, to monitor population dynamics and to intervene with effective conservation strategies when the population of an endangered species declines. On Sulawesi Island, Indonesia, anthropogenic activities, such as agriculture, are decreasing the remaining natural habitats available for several endemic and endangered species. The effect of this forest loss on the threatened moor macaques (*Macaca maura*) in South Sulawesi is unknown, and data on the population status of this species are needed to design effective conservation strategies. To assess the population status of the moor macaques, we walked linear transects (N = 29, survey effort = 114 km) at six sites between November 2019 and March 2020 to estimate macaque population density and encounter rate. We tested the effect of anthropogenic activities on macaque encounter rate. Our global density estimate (24 individuals/km<sup>2</sup>) was lower than the overall estimate from the most detailed survey conducted on this species, which covered its whole geographic distribution (36.1 individuals/km<sup>2</sup>). However, these results should be interpreted with caution because the previous density estimate falls within the confidence intervals of our estimate. Furthermore, we found regional declines in moor macaque encounter rates in at least two sites compared with previous studies. We found a high presence of anthropogenic activity in the forests inhabited by macaques. Moor macaques were less abundant in open areas with no forest (i.e., clear cuttings) than in forested areas, and in the presence of nonspecies-specific hunting traps (i.e., wire-loop traps). Moreover, moor macaques were more abundant in areas with a higher presence of humans and domestic animals. Overall, our data suggest that the population of this

Handling Editor: Joanna Setchell

Extended author information available on the last page of the article

Published online: 22 February 2022

 Springer

1

species may be declining in certain regions but further surveys are needed to corroborate whether this is occurring across the entire geographic distribution.

**Keywords** Anthropogenic activity · Conventional distance sampling · Encounter rate · Line transect surveys

## Introduction

Anthropogenic activities, such as agriculture, mining, and infrastructure development, are the main drivers of the modification and deterioration of natural environments (Sih, 2013; Díaz *et al.*, 2019). To date, almost 97% of the terrestrial surface of the planet has been altered by anthropogenic activities (Bersacola *et al.*, 2021; Dirzo *et al.*, 2014; Plumptre *et al.*, 2021). Such activities affect species survival through natural resource exploitation and deforestation (Halpern *et al.*, 2008; Parmesan and Yohe, 2003). For instance, agricultural areas are expanding in tropical regions, thereby replacing forests (Hansen *et al.*, 2013; Phalan *et al.*, 2013). In primate habitats, anthropogenic activities cause reductions in forest cover and resource availability, threatening primate populations (Boyle and Smith, 2010; Estrada *et al.*, 2017; Marsh & Chapman, 2013; Spaan *et al.*, 2020). This is especially the case in Southeast Asia, where at least 91% of the primate populations are declining (Amano *et al.*, 2021; IUCN, 2019).

Species' population status (i.e., density, abundance, and geographic distribution) may vary along space and time as a result of habitat modification by anthropogenic activities (Estrada *et al.*, 2017; Wich & Marshall, 2016). Monitoring primate populations therefore provides important insights into how primates are adjusting to these modified habitats. Line transect surveys are the most commonly used method to survey primate populations (Buckland *et al.*, 2010; Campbell *et al.*, 2016). During the past 50 years, data provided by line transect surveys have been used to monitor population dynamics and to take timely management decisions to protect declining populations of endangered species before it is too late (Caro *et al.*, 2012; Stokes *et al.*, 2010).

Sulawesi Island, Indonesia, lies at the centre of the Wallacea biodiversity hotspot and is inhabited by several endemic plant and animal species. For example, between 25% and 47% of all mammals, birds, amphibians, and reptiles living on the island are endemic (Lee *et al.*, 2007). However, many species inhabiting the island are endangered, because South Sulawesi is one of the most populated areas of Indonesia (the capital Makassar is the 4th largest city of Indonesia). Human population density in Sulawesi has quadrupled over the past 20 years (Supriatna *et al.*, 2020). The dramatic increase in human population, together with logging, hunting, mining, agricultural, and commercial development, constitutes a crucial threat to biodiversity conservation in Sulawesi (Kelley, 2018; Supriatna *et al.*, 2020). Moreover, deforestation has increased rapidly in recent years, in part due to the cultivation of corn, coffee, cocoa, and oil palm (Phalan *et al.*, 2013; Supriatna *et al.*, 2020), forcing wildlife to live in relict patches of mature forest or in areas strongly affected by

anthropogenic activities (e.g., agriculture, logging, farming). To date, only 15% of Sulawesi forests are still intact, mostly steep, not-easily accessible areas where farming, logging, and other anthropogenic activities are difficult to be conducted and where resources for wildlife (i.e., food, water, and sleeping trees) are scarce (Supriatna *et al.*, 2015, 2020).

Sulawesi hosts several species of the genus *Macaca*, which are all endemic (Riley, 2010). Of these, the moor macaque (*Macaca maura*) inhabits the Southern part of the island and is currently listed as Endangered by the IUCN Red List of Threatened Species (Lee *et al.*, 2020). Moor macaques live in groups of around 40 individuals, with female philopatry and male dispersal (Okamoto *et al.*, 2000). The last study estimating the density (i.e., number of individuals/area) and structure of the moor macaque population was published more than 20 years ago (Okamoto *et al.*, 2000) and only surveyed a small part of the species' geographic range (i.e., the Karaenta Natural Reserve). In this area, group size grew continuously during the 10 years of the study, from 20 to 41 individuals, with a population density of 70 individuals/km<sup>2</sup> (Okamoto *et al.*, 2000). A more recent report, published in Bahasa Indonesian, surveyed one single regency (Pangkep, South Sulawesi) located in the Western part of their geographic range and estimated a population density of 98 individuals/km<sup>2</sup> (Labahi, 2010).

To our knowledge, the only survey that has estimated population density across the entire known geographic range of moor macaques was conducted 33-35 years ago, between December 1987 and October 1989 (Supriatna *et al.*, 1992). This study estimated that the population of moor macaques was decreasing strongly (Supriatna *et al.*, 1992). Moreover, groups of moor macaques inhabiting areas with intense anthropogenic activity (e.g., logging or farming) were smaller, had a lower ratio of infants and juveniles to adults, and a population density less than half that of groups in protected areas (20 vs. 50 individuals/km<sup>2</sup>, respectively; Supriatna *et al.*, 1992). Finally, the moor macaque population appeared to be mainly threatened by the lack of protected areas in the species' range and by the increasing impact of anthropogenic activities on macaques in all the areas surveyed, including illegal poaching and poisoning (Supriatna *et al.*, 1992). Moor macaques have been mainly found in resource abundant lowland forests (Albani *et al.*, 2020; Li & Rogers, 2005) and, at lower densities, in karst areas (Lee *et al.*, 2020). In the last decade, however, the moor macaque geographical range has become largely restricted to karst areas (Albani *et al.*, 2020; Supriatna *et al.*, 2020), likely because these areas are less accessible and thus less impacted by anthropogenic activities.

In response to the decline in the moor macaque population, the Indonesian authorities created the Bantimurung-Bulusaraung National Park in 2004. Although moor macaques are being killed in the National Park (Albani *et al.*, 2020; Hanson and Riley, 2018; Morrow *et al.*, 2019; Okamoto *et al.*, 2000; Riley *et al.*, 2014), it is not clear to what extent the National Park is preventing the decline of the macaque population (Lee *et al.*, 2020), as the park also is affected by the increase in anthropogenic activities occurring throughout Southern Sulawesi. For example, the second busiest road crossing South Sulawesi traverses the National Park.

The lack of recent data on the moor macaque population size makes it difficult to reliably estimate its conservation status and evaluate whether current conservation

strategies are effective (Junker *et al.*, 2020; Lee *et al.*, 2020). Monitoring the population density of moor macaques, both in and outside protected areas, is essential to identify macaque-rich areas that should be protected (Ahmed *et al.*, 2021; Gray *et al.*, 2016; Lee *et al.*, 2020; Milda *et al.*, 2020). We surveyed six sites across South Sulawesi to provide updated estimates of (a) the size of the moor macaque population and (b) the effect of anthropogenic activities on the regional relative abundance of macaques (i.e., the number of individuals/km surveyed). If populations are declining due to anthropogenic activities, we predict that (1) overall and regional macaque population density would be lower than previous estimates; and (2) the relative abundance of moor macaques would be negatively correlated with anthropogenic activities, estimated by, e.g., the presence of humans, of domestic animals, or of traps.

## Methods

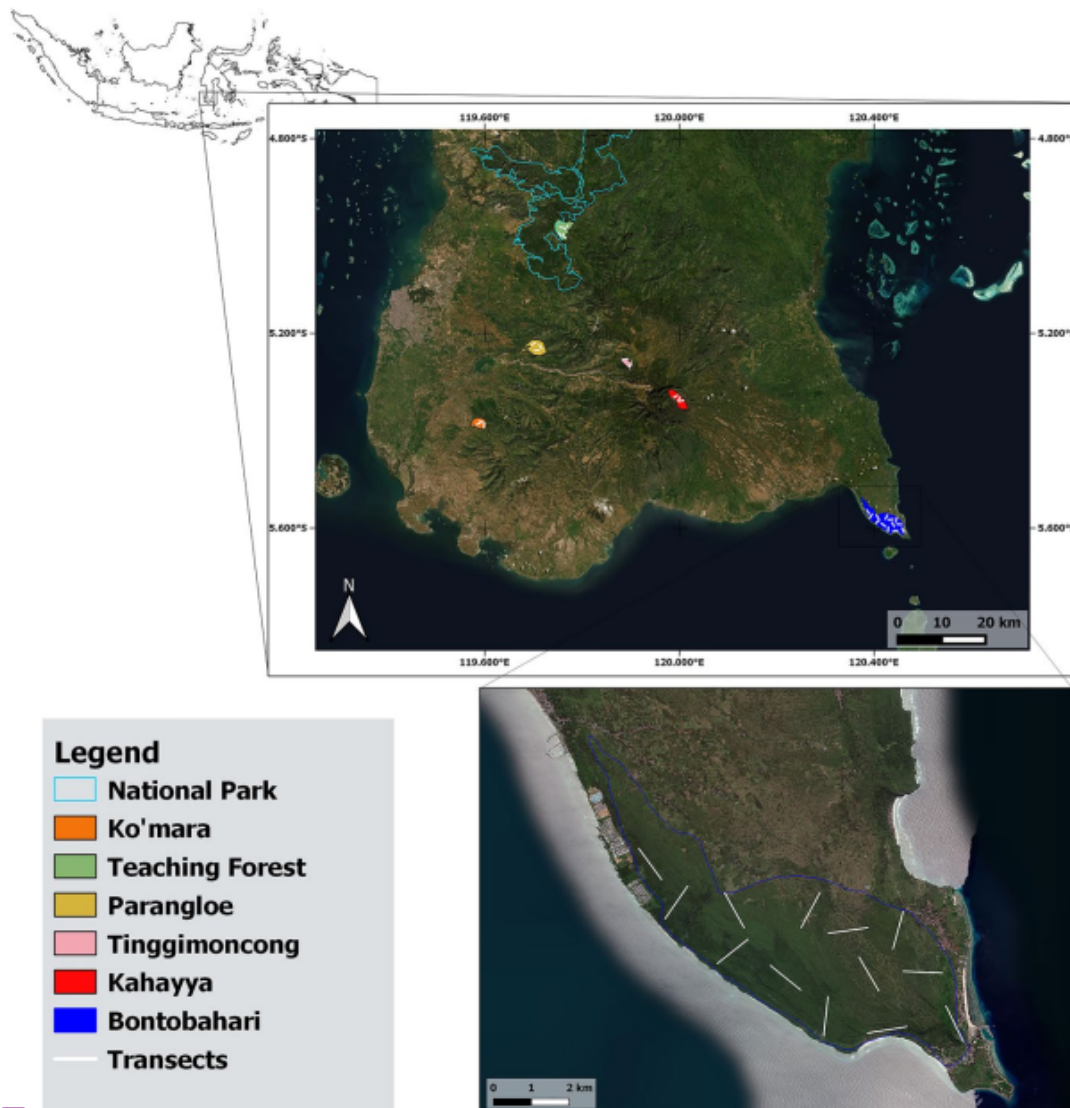
### Study Site

We surveyed the Southern part of the geographic range of moor macaques, from Bontobahari (5°33'1.33"S, 120°24'45.78"E) to Camba (4°59'36.60"S, 119°45'7.13"E; Fig. 1). The areas surveyed lie between zero and 2,874 m.a.s.l. and are composed of a mosaic of deciduous forest interspersed with grasslands (resulting from habitat conversion), primary and secondary forests surrounded by agricultural areas, karst forests, and savannah (Lee *et al.*, 2020).

### Data Collection

We selected areas to be surveyed within the geographic range of moor macaques described by the IUCN (Lee *et al.*, 2020; Supriatna *et al.*, 2008). We selected areas based on: 1) the presence of suitable habitats for the macaques; and 2) informal interviews with the local community (i.e., people living close to the forest or working in the forest, and local authorities) about the presence/absence of macaques in the area. Since 2018, we have collected information about the presence of moor macaques in different habitat types within its geographical distribution (unpublished data) during the data collection for other research projects in Sulawesi (Amici *et al.*, 2020; Beltrán Francés *et al.*, 2020; Gomez-Melara *et al.*, 2021; Hernández Tienda *et al.*, 2021). Therefore, we used this information to select suitable habitats to survey the moor macaque population (Kuhl *et al.*, 2008).

We considered a habitat as suitable for macaques when forest cover was  $\geq 50\%$  per km<sup>2</sup>, because this is necessary for moor macaques to find shelter and food (Fotang *et al.*, 2021). We considered primary, old and young secondary forest and agroforest (i.e., forest area composed of natural plant species growing among crops; Nekaris *et al.*, 2017) as suitable forest types for moor macaques. We did not consider production forests (i.e., consisting of nonnative tree species, such as rubber production forest) as a suitable habitat. We determined forest cover every 10 km<sup>2</sup> in



**Fig. 1** Map of South Sulawesi showing the location of 6 areas surveyed in the *Macaca maura* geographic range and of the transects walked in Bontobahari between November 2019 and March 2020.

the overall study area, using satellite images from 2019 (Landsat) in Google Earth Pro (v.7.3.3).

To conduct informal interviews with local communities, we first informed local authorities at each study site about the aims of our project and the importance of conducting interviews with the communities to gather information on the distribution of moor macaques. After obtaining verbal informed consent from the local authorities and the interviewees, we conducted the interviews outside the interviewee's house at least 1 week before surveying the area. We conducted all interviews in the presence of local authorities.

We conducted line transect surveys to estimate the presence/absence of moor macaques and their population size and composition (Butynski, 1990; Harcourt, 1995; Plumptre & Reynolds, 1994; Worman & Chapman, 2006). We positioned twenty-nine, 1 km-long transects pseudo-randomly on the satellite image of the

selected areas (Google Earth Pro, v.7.3.3), trying to cover each area as much as possible. We covered 12% of the overall selected area (effort = 9.12 km<sup>2</sup>; Table I). We calculated the overall area covered during surveys by multiplying the number of transects by the area covered by each transect (i.e., effort: length of the transect times the width of the area checked at both sides of the transect), divided by the total size of the areas surveyed. The satellite image included altitude contour lines (every 50 m) providing information on the topography of the terrain. We distributed transects randomly on the map and relocated transects that were less than 1 km from another transect or outside of suitable areas, by moving them to an empty area while maintaining the same orientation. We also reorientated transects that were located over rivers or areas with steep slopes. We ground-truthed the location of transects once we were in each location to make sure that the slope and vegetation of the area matched what was predicted by the satellite images. We established 1 km as the minimum distance between transects based on the size of the area being surveyed and the expected density and home range of the macaques (Okamoto *et al.*, 2000; Supriatna *et al.*, 1992). The distance between transects in each surveyed area ranged from 1 km to 1.81 km, with a mean distance of 1.23 km.

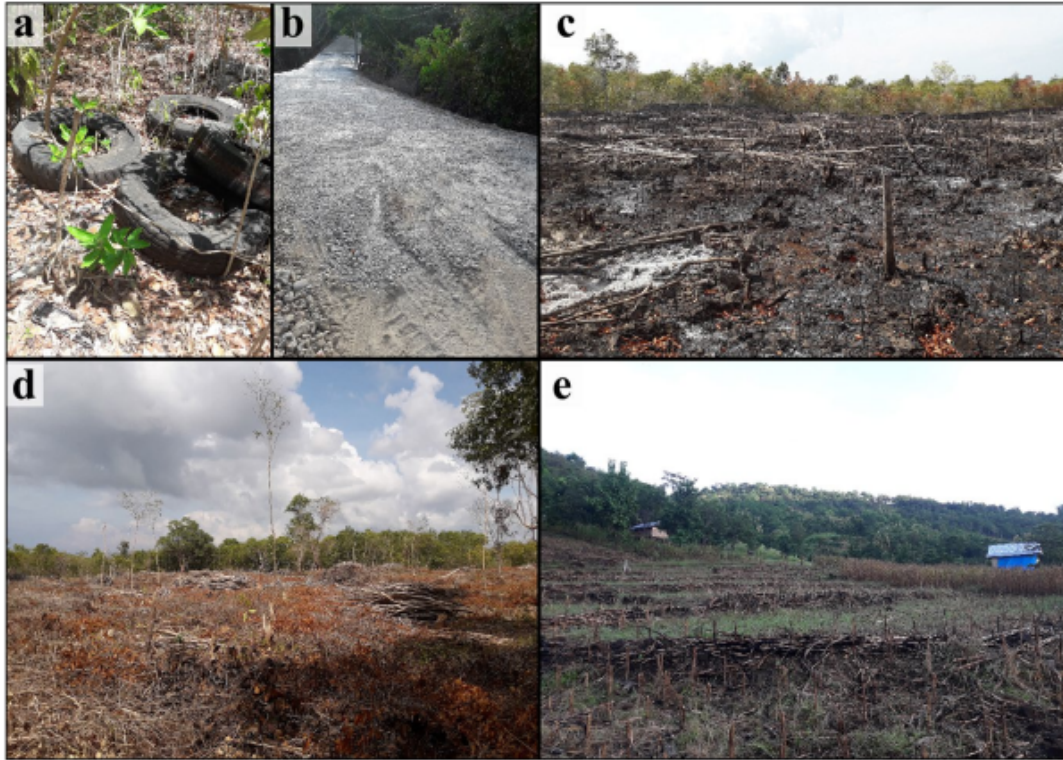
The first author collected the data between November 28, 2019 and March 20, 2020. We walked each transect twice on two consecutive days, between 9:00 and 15:00, at a maximum speed of 1 km/hr. While walking the transects, the first author used a GPS unit (Locus Map 4.1; Asamm Software 2009) to keep line transects correctly orientated from start to end. When transects included steep inclines, declines, and gorges, we used marked stakes to make accurate distance and orientation measurements (Allredge *et al.*, 2007). During the survey, we recorded GPS coordinates every time that we detected a macaque. To test whether macaques were found above 1,000 m a.s.l, we used the GPS coordinates to estimate the elevation of all sightings recorded using Google Earth Pro (v.7.3.3). Whenever possible, we recorded the sex (in adults) and age category (using two categories: adult and immature, which included subadults, juveniles, and infants) of each individual detected. We determined sex and age category by observing the genitalia (i.e., individuals with evident genitalia: testicles for males, anogenital swelling for females) and body size (Okamoto *et al.*, 2000). When a female macaque did not present an anogenital swelling, we used body size to determine age, as immatures are smaller than adults in this species (Okamoto *et al.*, 2000). We took a picture of each individual observed to check sex and age after data collection, where necessary. If we did not observe a macaque directly above or on the transect (i.e., perpendicular distance = 0), we used a Laser View Finder (Urcei ZL-100) to measure the perpendicular distance from the transect centreline to the individual. Because there are no published data on group spread in our study species, we considered multiple sightings of macaques along the same transect as belonging to the same group, based on the mean group spread of a closely related species, Celebes crested macaque (*Macaca nigra* 1,128 m<sup>2</sup>; Waterman, 2021).

To test the effect of anthropogenic activities on the moor macaque population, we recorded the presence and type of anthropogenic activity observed during surveys (Fig. 2). We measured anthropogenic activities as nonmutually exclusive categories: (1) number of humans (e.g., farmers or loggers) detected during the transect walk,

**Table 1** Regions where we collected data during the population survey, area covered during transect walks and population density estimates per region for *Macaca maura* from November 2019 to March 2020 (South Sulawesi, Indonesia)

Region	Area (km <sup>2</sup> )	Forest cover (km <sup>2</sup> )	Transects (N)	Effort (km <sup>2</sup> )	Groups (N)	Macaques (N)	Group encounter rate (groups/km)	Individual encounter rate (individual/km)	Density (individuals/km <sup>2</sup> )	Confidence intervals
Bontobahari	28.30	26.90	13	4.15	7	57	0.27	2.20 (3.39*)	27.4 (33.9*)	13.7-55.0
Camba	12.70	12.10	4	1.27	2	13	0.25	1.63		
Kahayya	9.45	7.95	4	1.24	2	12	0.26	1.55		
Tinggimoncog	3.60	3.40	2	0.59	0	0	0.0	0.0 (0.0*)		
Parangloe	12.70	10.80	3	0.96	1	8	0.16	1.33		
Ko'mara	6.76	5.66	3	0.91	3	17	0.53	2.98		
Overall	73.51	66.81	29	9.12	15	107	0.26	1.88 (3.83*)	24.0 (36.1*)	14.6-39.4

\*Data from Supriatna *et al.*, 1992



**Fig. 2** Examples of anthropogenic activities recorded during data collection in the geographic range of *Macaca maura*, South Sulawesi, between November 2019 and March 2020: **a** garbage; **b** road; **c** fire; **d** logging; **e** agricultural plots.

(2) number of domestic animals (i.e., cows, goats, sheep or dogs) detected during the transect walk, (3) number of hunting traps (i.e., nonspecies-specific snare traps used to hunt other species that might accidentally trap macaques) detected during the transect walk, (4) open areas with no forest (i.e., agricultural plots, clear cutting, or logging, in  $\text{m}^2$ ), and (5) areas with other anthropogenic activities (i.e., camp, fire, garbage/waste disposal, or construction, in  $\text{m}^2$ ). The use of snare traps is banned in Indonesia, but this hunting practice is still used in some areas. When we encountered any of these types of anthropogenic activity along the transect, we recorded the GPS location. When we encountered open areas or areas with other anthropogenic activities, we recorded the perpendicular distance from the transect centreline to the nearest forest patch using the Laser View Finder and the distance walked through the anthropogenic activity area (marking the beginning and the end of the area with a GPS). We used these distances to estimate the size of open areas and areas with other anthropogenic activity during the transect walk in  $\text{km}^2$  (Fig. 1).

### Data Analysis

We estimated moor macaque population density using the conventional distance sampling (CDS) method for line transect survey (Buckland *et al.*, 2001, 2015) in Distance software (Thomas *et al.*, 2010). CDS assumes that all the animals on the

transect are detected and that detection probability decreases with distance from the transect (Buckland *et al.*, 2001, 2015; Spaan *et al.*, 2019). Distance software uses the perpendicular distances ( $x$ ) to model the detection function  $g(x)$ .  $g(x)$  is defined as the probability of detecting a macaque that is at distance  $x$ , where  $0 \leq x \leq w$  and  $w$  is the truncation distance (i.e., maximum perpendicular distance from the transect centreline beyond which detected individuals are excluded from the density estimation). To select a plausible and parsimonious model estimating  $g(x)$ , we tested three key functions (i.e., uniform, half-normal, and hazard-rate) with three adjustment terms (i.e., cosine, simple polynomial, and hermite polynomial; Buckland *et al.*, 2001, 2015; Spaan *et al.*, 2019). We compared the models obtained using the Akaike information criterion (AIC) and chose the best fitting model(s) that differed less than 2 units from the lowest AIC (i.e.,  $\Delta \text{AIC} < 2$ ) and had the fewest parameters (Buckland *et al.*, 2001). To improve the robustness of the perpendicular distance data analysis, we right-truncated  $w$  to 5%, discarding the largest distances from the analysis (Buckland *et al.*, 2001; Marques *et al.*, 2011; Valente *et al.*, 2016; Spaan *et al.*, 2019). We calculated the overall population density based on all sites and for sites with observations of at least 40 individual macaques (Buckland *et al.*, 2001; Marshall *et al.*, 2008). Finally, for a more detailed assessment of whether the population of moor macaques is declining, we compared the relative abundance (encounter rates) of macaques at each site that was also surveyed in the previous survey (Supriatna *et al.*, 1992). For this comparison, we used individual encounter rates (number of individuals encountered per kilometer walked) for each site and transect (Chapman *et al.*, 2018; Spaan *et al.*, 2020). To calculate individual encounter rates from the previous study (because these data were not available), we estimated the distance walked in each site by Supriatna *et al.* (1992) by dividing the area surveyed by the width of the transects (100 m; Southwick & Cadigan, 1972; Struhsaker & Eisenberg, 1981; Wilson & Wilson, 1975).

We tested the effect of anthropogenic activity on moor macaque encounter rate by using a generalized linear mixed model (GLMM) with a Poisson distribution and log link using the glmmTMB package (version 1.0.1; Brooks *et al.*, 2017) in R (R Development Core Team, 2013, version 3.5.2). We entered the individual encounter rate per transect into our model as a dependent variable. We entered the length of the transect as an offset term. We included the following test predictors: (1) number of humans, (2) number of domestic animals, (3) number of nonspecies-specific traps, (4) open areas, and (5) other anthropogenic activities. We defined a single transect as the unit of analysis. Finally, because we walked each transect twice, we entered transect identity as a random factor (Bolker *et al.*, 2009). We  $z$ -transformed continuous predictor variables before running the analyses to improve normality and facilitate interpretation of the results (Kirkpatrick *et al.*, 2017). We used likelihood ratio tests to compare the full model, containing all predictor variables, to a null model containing only the random factor and the offset term (Forstmeier & Schielzke, 2011). If we found a significant difference between the full and the null model, we conducted likelihood ratio tests to obtain the  $P$  values for each test predictor via single-term deletion, using the R function `drop`. We detected no stability, convergence, and dispersion problems with the GLMM, using the DHARMA

package (Hartig, 2021). Variance Inflation Factors (VIFs) were minimal for all test predictors (maximum VIF = 1.95), indicating low collinearity (Field, 2005).

## Ethics Note

Permissi<sup>4</sup> to conduct the informal interviews and the population survey was granted by the RISTEKDIKTI (Indonesian Foreign Research Permit Division, Ministry of Research and Technology/National Research and Innovation Agency). RISTEKDIKTI also granted access to the moor macaques. This study followed the Code of Best Practices<sup>6</sup> for Field Primatology, from the International Primatological Society (2014). The authors have no conflict of interest to declare.

**Data Availability** The datasets generated during and/or analysed during the current study are available from the corresponding author on reasonable request.

## Results

We selected six areas to survey (Fig. 1), which were mostly covered by forests (91% of surveyed areas; Table I). During the 57 km of transects surveyed ( $n = 29$ ; Table I), we sighted 107 moor macaques belonging to 15 groups (Table I; Fig. 1). Overall macaque encounter rate was 1.88 individuals per kilometer walked, with the highest encounter rate in Ko'mara (2.98 individuals/km) and the lowest in Tinggimoncong (0 individuals/km; Table I). We encountered macaques on 52% of the transects (15/29), and during both transect walks in only 17% of the transects (5/29). We observed moor macaques at elevations between 18 and 1316 m a.s.l. (mean:  $287 \pm$  SD: 372 m). Both individual and group encounter rates were higher in areas under 1,000 m a.s.l. (2.08 individuals/km; 0.29 groups/km) than above 1,000 m a.s.l. (1.05 individuals/km; 0.18 groups/km),<sup>29</sup> this difference was not statistically significant (individuals: ANOVA:  $F = 3.043$ ,  $df = 1$ ,  $P = 0.156$ ; groups: ANOVA:  $F = 1.447$ ,  $df = 1$ ,  $P = 0.295$ ). We determined the sex and age category for 34 monkeys (32%): 16 adult males, 8 adult females, and 12 immatures of unspecified sex.

As the probability of detecting a macaque<sup>26</sup> increased with distance from the transect centerline, the detection function that best fit the perpendicular distance data was the half-normal key function with a simple polynomial adjustment term. We discarded two perpendicular distances (62 m and 64 m) from the analysis after right-truncating the largest distances. We estimated the overall population density as 24.0 individuals/km<sup>2</sup> (Table I).

We found signs of anthropogenic activity on all 29 transects. "Other anthropogenic activities" was the most frequent activity observed (97%). Agriculture was more abundant in Northern areas (Tinggimoncong, Ko'mara and Kahayya; 75% of the transects) than in the Southern area (Bontobahari; 30% of the transects), where the weather is drier and agricultural fields are therefore less common. We found domestic animals on 62% of the transects (18/29 transects) and hunting traps on 5

transects, all in the Southern area (38% of transects in Bontobahari). The number of traps per transect ranged from 0 to 3.

The full GLMM model differed significantly from the null model (likelihood ratio test:  $\chi^2 = 16.883$ ,  $df = 5$ ,  $P = 0.005$ ). As predicted, the individual encounter rate was lower in areas with more open spaces and with no trees than in areas with greater forest cover (Table II). Moreover, the individual encounter rate was lower when more traps were found in an area and higher when more domestic animals were sighted in the area (Table II). The other test predictors had no significant effect on individual encounter rate (Table II).

## Discussion

Our findings suggest that the population density of moor macaques is low outside of protected areas and support our hypothesis that the population of this species is declining in several regions, especially in the Southern forests of the species' geographic range. Specifically, we found a lower macaque encounter rate in 2020 than at the same sites surveyed in 1992. Furthermore, we found a high presence of anthropogenic activity in forests inhabited by moor macaques, and a negative effect of the number of nonspecies-specific hunting traps in the forest on macaque encounter rate.

We calculated the overall population density and the individual encounter rate, from the data provided in the previous study of moor macaque populations, as 36.1 individuals/km<sup>2</sup> and 3.83 groups/km (Supriatna *et al.*, 1992). Although direct comparisons between studies are difficult, due to differences in the sites surveyed and the methods used to estimate population density, our overall density estimate (24 individuals/km<sup>2</sup>) and encounter rate (0.94 individuals/km) were lower, but the density estimate from 1992 (Supriatna *et al.*, 1992) falls within the confidence intervals of our estimate. Therefore, these differences should be interpreted with caution and further surveys are needed to verify whether the overall moor macaque population density is decreasing. Moreover, surveys in the Northern region of the species' geographical distribution are urgently needed to understand the current state of populations there.

**Table II** Results of a GLMM model testing the effect of anthropogenic activities on the population size of *Macaca maura* from November 2019 to March 2020 (South Sulawesi, Indonesia)

	Estimate	SE	2.5% CI	97.5% CI	z	LRT	df	P
Intercept	-7.84	0.567	-8.951	-6.728	-13.825	-	-	-
Presence of humans	0.61	0.3234	-0.028	1.240	1.874	3.612	1	0.057
Presence of domestic animals	0.93	0.387	0.171	1.689	2.401	6.732	1	<b>0.009</b>
Presence of traps	-1.42	0.872	-3.128	0.290	-1.627	5.353	1	<b>0.021</b>
Open areas	-0.96	0.466	-1.874	-0.048	-2.063	5.148	1	<b>0.023</b>
Other anthropogenic activity	-1.02	1.115	-3.208	1.163	-0.917	2.633	1	0.105

In bold are *p* values <0.05

In the Southern part of Sulawesi (Bontobahari), macaque encounter rate was relatively high in 1992 (3.39 individuals/km) but decreased to 2.20 individuals/km during our survey. Worryingly, although this area falls under local protection (i.e., logging and hunting are forbidden by the local government and communities), forest loss is still occurring due to the expanding tourism industry and agriculture (Supriatna *et al.*, 2020). Furthermore, the long dry season in this Southern area (7 dry months per year on average; Supriatna *et al.*, 1992) may further increase the negative effects of anthropogenic activities on the moor macaque population (Campos *et al.*, 2017; Garber *et al.*, 2020; van Schaik & Brockman, 2005). For instance, sleeping sites are scarce in the area due to logging for the traditional boat building industry (Supriatna *et al.*, 1992), and forest recovery after logging may be strongly hindered by dry climatic conditions (Elias *et al.*, 2020; Graham *et al.*, 2016; Lewis *et al.*, 2015; Stewart *et al.*, 2020).

We observed a similar decrease in moor macaque encounter rate in the National Park in the district of Camba. In mixed primary and secondary forests, we estimated macaque encounter rate at 1.63 individuals/km. Encounter rate in the closest location monitored in 1992 (Karaenta, 7 km from Camba, located in the same National Park) was estimated at 5.19 individuals/km. Although the forest of Camba is protected by Bantimurung-Bulusaraung National Park, human settlements and road traffic are abundant (Supriatna *et al.*, 1992; Zak and Riley, 2017), putting macaques at risk of road accidents and food-provisioning, which can have deleterious health effects (Healey *et al.*, 2020; Riley *et al.*, 2021). Despite the implementation of protective measures in this region of Southern Sulawesi, ongoing anthropogenic activities are still likely to threaten the long-term maintenance of moor macaque populations.

One of the main anthropogenic activities in Sulawesi outside protected areas is agriculture (Supriatna *et al.*, 2020). As a result, primate groups are often found in areas where agricultural fields and forests are mixed (Campbell-Smith *et al.*, 2011; Estrada *et al.*, 2012). We conducted macaque surveys in agroforests (e.g., corn and coffee plantations interspersed or surrounded by forest) and found that moor macaque encounter rate was lower during our survey than in 1992. For instance, moor macaque encounter rate in agroforests in Ko'mara was estimated at 2.98 individuals/km, the highest value among our survey regions, but still far from the 6.34 individuals/km estimated in similar agroforests 32 years ago (Supriatna *et al.*, 1992). During our surveys, we observed macaques inhabiting agroforests in Ko'mara feeding on corn plantations. Moor macaques prefer corn and fruit crops to coffee, cacao, or rice (Supriatna *et al.*, 1992; Zak and Riley, 2017). It is therefore possible that the type of crop explains the high encounter rate of macaques estimated in Ko'mara, an area mainly covered by corn plantations. In addition, some of the local people that we interviewed in Ko'mara mentioned that several macaque groups use agricultural fields to move between forest patches. Thus, the combination of small-scale agricultural plots with well-conserved forest, at the landscape scale, may have a positive effect on moor macaque populations (Kiffner *et al.*, 2020). This is in line with studies showing that agroforests can support populations of several primate species (Campbell-Smith *et al.*, 2010; Estrada *et al.*, 2012; Riley, 2010). A better understanding of the effect of agroforests on the abundance and distribution of moor macaques is therefore crucial to develop effective conservation strategies that benefit

local farmers and macaques. We suggest that such studies should be performed at the landscape scale (Arroyo-Rodríguez & Fahrig, 2014; Galán-Acedo *et al.*, 2019; Junker *et al.*, 2020) to determine the importance of the remaining forest cover for the use of agroforests by macaques.

Anthropogenic activities are concentrated in lowland areas of Sulawesi, and as a result, moor macaque populations are likely displaced to remnant forest patches at higher altitudes (i.e., mountains and karst towers; Albani *et al.*, 2020; Supriatna *et al.*, 2020). To date, moor macaques have been found from 0 to 2,000 m a.s.l. (Lee *et al.*, 2020). In our study, encounter rate was higher at lower altitudes (e.g., Ko'mara, 300 m a.s.l.; Table I) than in similar habitats located at elevations beyond 1,000 m a.s.l. (e.g., in Kahaya, at 1,200 m a.s.l.), although the difference was not significant. Further data are needed to determine whether groups of macaques inhabiting highland areas, where resources are scarce compared with lowland areas (Supriatna *et al.*, 2020), are smaller (Albani *et al.*, 2020; Lee *et al.*, 2020). If this hypothesis is confirmed, groups of moor macaques that have been forced to live in the mountains due to anthropogenic activities may face greater ecological challenges and be at greater risk of extinction. We did not observe any macaques in Tinggimoncong, a mountainous area (1,500 m a.s.l.) composed of a mix of young and old secondary forest, pine forest, and agriculture fields (e.g., vegetables, coffee, and corn). This result is in line with the data reported in the last survey in the region, where no macaques were observed either (Supriatna *et al.*, 1992). The high location of the region and the increase in agricultural fields in the area (Supriatna *et al.*, 2020) may explain the continued scarcity of macaques in Tinggimoncong.

As a result of a rapid reduction in forest cover over the past 30 years (Phalan, 2013; Supriatna *et al.*, 2020), some of the surveyed areas are separated by  $\geq 40$  km and are not connected by ecological corridors. The southernmost forest patch we surveyed (Bontobahari), for instance, is isolated from other forests by agricultural fields and human settlements, limiting macaque dispersal or causing them to take potentially deadly risks, such as crossing highly trafficked roads. The lack of ecological corridors connecting the different areas inhabited by moor macaques implies that their populations are likely fragmented, limiting gene flow and potentially affecting long-term population viability (Fa & Tagg, 2016; Meijaard & Nijman, 2000). Furthermore, moor macaque encounter rate was positively associated with forest cover, and macaques were seldomly observed in open areas. Therefore, conservation efforts should focus on protecting the remaining forests of South Sulawesi from forest conversion to other land covers (Malik *et al.*, 2015; Supriatna *et al.*, 2020; Waluyo *et al.*, 2005; Whitten & Henderson, 2012) to maintain connectivity between remnant subpopulations.

We found that the number of macaques was significantly lower in areas where snare hunting-traps were more abundant. Although these traps are mostly used by local people to hunt other species of mammals (e.g., wild pigs; personal observation; Latinne *et al.*, 2020), the use of nonspecies-specific traps may affect the population of protected and threatened species, including moor macaques (Borgerson, 2015; Rosenbaum *et al.*, 1998; Waller & Reynolds, 2001). This result is in line with studies of other species. For instance, the use of snare traps to hunt tigers (*Panthera tigris*) in Sumatran forests led to a decrease in the population of Malayan tapir (*Tapirus indicus*; Campbell *et al.*, 2019). Populations of terrestrial primate species have

also been negatively affected by the presence of snare traps in their habitats (Fa & Yuste, 2001; Kumar & Sankhyan, 2021; Munn, 2006; Quiatt *et al.*, 2002; Yersin *et al.*, 2017). For example, chimpanzee (*Pan troglodytes*) populations inhabiting areas where snare traps are present show lower survival rates due to the wounds inflicted by these traps (Munn, 2006; Yersin *et al.*, 2017). Deforested areas may induce more terrestrial habits in the primate species occurring there, increasing the negative effects of snare traps on primate populations (Figel *et al.*, 2021). The high rate of deforestation in South Sulawesi (Supriatna *et al.*, 2020), together with the presence of snare traps in areas where they occur, may therefore negatively affect the survival of moor macaques. The consistent enforcement of banned, nonspecific hunting techniques, together with the implementation of long-term and local conservation projects, may reduce this threat to macaques and other terrestrial species (Gray *et al.*, 2018).

We found that macaque encounter rate was higher in areas with a higher number of domestic animals, which can be considered a proxy of the intensity of anthropogenic activity in an area. There are three plausible explanations for these unexpected results. First, it is possible that macaques prefer to use relatively flat areas (compared with karst areas), which also are usually preferred by farmers and shepherds for their crops and herds (Albani *et al.*, 2020; Anderson & Mammides, 2020; Estrada *et al.*, 2017; Mwenja, 2007). Second, these results may suggest that macaques often are found near human settlements because of increased anthropogenic activity and habitat loss (Estrada *et al.*, 2012, 2017). For instance, macaques living in human-modified habitats may find resources (e.g., food and water) in areas close to human settlements in the form of crop fields or water tanks (Sha *et al.*, 2009). Finally, shepherds might be using the forests close to their settlements to feed their cattle, increasing competition for available food resources (Wich & Marshall, 2016). This scenario increases the risk of human-macaque conflict and persecution due to crop foraging (Riley & Priston, 2010) and represents a significant threat for the persistence of moor macaque populations. Furthermore, increasing interactions between wildlife and domestic animals enhance opportunities for pathogen transmission (Jori *et al.*, 2021), especially in human-modified habitats (Jones *et al.*, 2013). For instance, several Asian endemic pig species are threatened by a virus transmitted by domestic pigs (*Sus scrofa*; Luskin *et al.*, 2021) and endangered species, such as the African wild dog (*Lycaon pictus*) or the Ethiopian wolf (*Canis simensis*), face disease outbreaks due to interactions with free-ranging livestock in their habitats (Higgitt *et al.*, 2019; Johnson *et al.*, 2014). Coexistence between wildlife and domestic animals therefore should be monitored by conservation authorities (Kiffner *et al.*, 2020).

Sulawesi Island lies at the centre of the Wallacea biodiversity hotspot, one of the world's 36 biodiversity hotspots (<https://www.conservation.org/priorities/biodiversity-hotspots>), and the forests inhabited by moor macaques also host many other endemic and endangered species (Brambach *et al.*, 2017; Evans *et al.*, 2003). If deforestation continues at current rates, moor macaque habitat will be increasingly threatened, potentially leading to local population extinctions (Supriatna *et al.*, 1992, 2020). Urgent conservation measures are therefore needed to conserve the forests of Sulawesi and the species that inhabit them (Estrada *et al.*, 2018; Supriatna *et al.*, 2020). Conservation measures should include extended protection of moor macaque habitat (with corridors connecting isolated areas), projects encouraging ecologically

sustainable activities in communities living alongside macaque populations to avoid potential conflict over resources, and environmental education projects aimed at raising awareness of the ecological importance of moor macaques and the threats faced by their populations. Special attention should be paid to isolated patches of forest surrounding the National Park, such as Bontobahari forest, which could be connected to the Southern part of the National Park through the implementation of forest corridors and reforestation projects. Moreover, a complete population survey focusing on the impact of different anthropogenic activities on the density, distribution, and demography of the moor macaques at a landscape scale is urgently needed (Lee *et al.*, 2020; Supriatna, 2019). As the geographic range of the species covers the complete region of South Sulawesi (Lee *et al.*, 2020), surveys should aim to identify remaining suitable habitat across the region and priority areas for their conservation.

**Acknowledgments** The authors warmly thank Filippo Aureli for supporting our research. We are extremely grateful to the local people and authorities in Camba, Bontobahari, Tinggimoncog, Kahayya, Ko'mara and Paranglo who helped us extensively with their knowledge and kindness during data collection. We thank the Kementarian Negara Riset dan Teknologi Republik Indonesia (RISTEK) for their permission to conduct research in Indonesia (Research permit: 338/E5/E5.4/SIP/2019), and the Kantor Balai Besar Konservasi Sumber Daya Alam Sulawesi Selatan (BKSDA SULSEL) for their help and work on wildlife conservation in South Sulawesi. We are most grateful to our research assistants Jose Luis Gómez-Melara, Carolina Hernández-Tienda, and Elisa Gregorio-Hernández for their help and support during data collection. We are extremely grateful to the Editor, Professor Setchell, and two anonymous reviewers for their useful and detailed comments on earlier drafts that have helped improve our manuscript. Finally, we thank the Primate Society of Great Britain (PSGB) for supporting our project with the Ardith Eudey Grant for Conservation 2019, and Professor John Oates for his immense help on the project and dedication to the conservation of Asian primates.

**Author Contributions** BM, FA, and VBF conceived and designed the study. VBF conducted fieldwork. VBF, DS, BM, and FA analysed the data. All co-authors wrote the manuscript.

**Funding** This study was partially funded by the Primate Society of Great Britain (Ardith Eudey Grant for Conservation 2019).

**Open Access** This article is licensed under a Creative Commons Attribution 4.0 International License, which permits use, sharing, adaptation, distribution and reproduction in any medium or format, as long as you give appropriate credit to the original author(s) and the source, provide a link to the Creative Commons licence, and indicate if changes were made. The images or other third party material in this article are included in the article's Creative Commons licence, unless indicated otherwise in a credit line to the material. If material is not included in the article's Creative Commons licence and your intended use is not permitted by statutory regulation or exceeds the permitted use, you will need to obtain permission directly from the copyright holder. To view a copy of this licence, visit <http://creativecommons.org/licenses/by/4.0/>.

## References

- Ahmed, T., Bargali, H. S., Verma, N., & Khan, A. (2021). Mammals outside protected areas: Status and response to anthropogenic disturbance in Western Terai-Arc landscape. *Proceedings of the Zoological Society (Calcutta)*, 74, 163–170. <https://doi.org/10.1007/s12595-020-00360-4>.
- Albani, A., Cutini, M., Germani, L., et al (2020). Activity budget, home range, and habitat use of moor macaques (*Macaca maura*) in the karst forest of South Sulawesi, Indonesia. *Primates*, 61, 673–684. <https://doi.org/10.1007/s10329-020-00811-8>.

- Allredge, M. W., Pollock, K. H., Simons, T. R., & Shriner, S. A. (2007). Multiple-species analysis of point count data: a more parsimonious modelling framework. *Journal of Applied Ecology*, *44*, 281–290. <https://doi.org/10.1111/j.1365-2664.2006.01271.x>.
- Amano, N., Wang, Y. V., Boivin, N., & Roberts, P. (2021). ‘Emptying forests?’ Conservation implications of past human–primate interactions. *Trends in Ecology & Evolution*, *36*(4), 345–359. <https://doi.org/10.1016/j.tree.2020.12.004>
- Amici, F., Widdig, A., MacIntosh, A. J. J., et al (2020). Dominance style only partially predicts differences in neophobia and social tolerance over food in four macaque species. *Scientific Reports*, *10*, 22069. <https://doi.org/10.1038/s41598-020-79246-6>.
- Anderson, E., & Mammides, C. (2020). The role of protected areas in mitigating human impact in the world’s last wilderness areas. *Ambio*, *49*, 434–441. <https://doi.org/10.1007/s13280-019-01213-x>.
- Arroyo-Rodríguez, V., & Fahrig, L. (2014). Why is a landscape perspective important in studies of primates? *American Journal of Primatology*, *76*, 901–909. <https://doi.org/10.1002/ajp.22282>.
- Beltrán Francés, V., Castellano-Navarro, A., Illa Maulany, R., et al (2020). Play behavior in immature moor macaques (*Macaca maura*) and Japanese macaques (*Macaca fuscata*). *American Journal of Primatology*, *82*, e23192. <https://doi.org/10.1002/ajp.23192>.
- Bersacola, E., Hill, C.M. & Hockings, K.J. (2021). Chimpanzees balance resources and risk in an anthropogenic landscape of fear. *Sci Rep*, *11*, 4569. <https://doi.org/10.1038/s41598-021-83852-3>
- Bolker, B. M., Brooks, M. E., Clark, C. J., Geange, S. W., Poulsen, J. R., Stevens, M. H. H., & White, J.-S. S. (2009). Generalized linear mixed models: a practical guide for ecology and evolution. *Trends in Ecology & Evolution*, *24*, 127–135. <https://doi.org/10.1016/j.tree.2008.10.008>.
- Borgerson, C. (2015). The effects of illegal hunting and habitat on two sympatric endangered primates. *International Journal of Primatology*, *36*, 74–93. <https://doi.org/10.1007/s10764-015-9812-x>.
- Boyle, S. A., & Smith, A. T. (2010). Can landscape and species characteristics predict primate presence in forest fragments in the Brazilian Amazon?. *Biological Conservation*, *143*(5), 1134–1143. <https://doi.org/10.1016/j.biocon.2010.02.008>
- Brambach, F., Leuschner, C., Tjoa, A., & Culmsee, H. (2017). Diversity, endemism, and composition of tropical mountain forest communities in Sulawesi, Indonesia, in relation to elevation and soil properties. *Perspectives in Plant Ecology, Evolution and Systematics*, *27*, 68–79. <https://doi.org/10.1016/j.ppees.2017.06.003>.
- Brooks, M., Kristensen, K., van Benthem, K., et al (2017). GlmmTMB balances speed and flexibility among packages for zero-inflated generalized linear mixed modelling. *The R Journal*, *9*(2), 378–400. <https://doi.org/10.32614/RJ-2017-066>.
- Buckland, S. T., Anderson, D. R., Burnham, K. P., Laake, J. L., Borchers, D. L., & Thomas, L. (2001). *Introduction to distance sampling: estimating abundance of biological populations*. Oxford University Press.
- Buckland, S. T., Plumptre, A. J., Thomas, L., & Rexstad, E. A. (2010). Design and analysis of line transect surveys for primates. *International Journal of Primatology*, *31*(5), 833–847. <https://doi.org/10.1007/s10764-010-9431-5>
- Buckland, S. T., Rexstad, E. A., Marques, T. A., & Oedekoven, C. S. (2015). *Distance sampling: Methods and applications*. Springer.
- Butynski, T. M. (1990). Comparative Ecology of blue monkeys (*Cercopithecus mitis*) in high-and low-density subpopulations. *Ecological Monographs*, *60*(1), 1–26. <https://doi.org/10.2307/1943024>.
- Campbell, G., Head, J., Junker, J., & Nekaris, K. A. I. (2016). Primate abundance and distribution: background concepts and methods. In S. A. Wich & A. J. Marshall (Eds.), *An introduction to primate conservation* (pp. 143–156). Oxford University Press.
- Campbell, K., Martyr, D., Risdianto, D., & Clemente, C. J. (2019). Two species, one snare: Analysing snare usage and the impacts of tiger poaching on a non-target species, the Malayan tapir. *Biological Conservation*, *231*, 161–166.
- Campbell-Smith, G., Simanjanrang, H. V., Leader-Williams, N., & Linkie, M. (2010). Local attitudes and perceptions toward crop-raiding by orangutans (*Pongo abelii*) and other nonhuman primates in northern Sumatra, Indonesia. *American Journal of Primatology*, *72*, 866–876. <https://doi.org/10.1002/ajp.20822>.
- Campbell-Smith, G., Campbell-Smith, M., Singleton, I., & Linkie, M. (2011). Raiders of the lost bark: Orangutan foraging strategies in a degraded landscape. *PLoS One*, *6*(6), e20962. <https://doi.org/10.1371/journal.pone.0020962>.

- Campos, F. A., Morris, W. F., Alberts, S. C., et al (2017). Does climate variability influence the demography of wild primates? Evidence from long-term life-history data in seven species. *Global Change Biology*, 23, 4907–4921. <https://doi.org/10.1111/gcb.13754>.
- Caro, T., Darwin, J., Forrester, T., Ledoux-Bloom, C., & Wells, C. (2012). Conservation in the Anthropocene. *Conservation Biology*, 26(1), 185–188. <https://doi.org/10.1111/j.1523-1739.2011.01752.x>.
- Chapman, C. A., Bortolamiol, S., Matsuda, I., et al (2018). Primate population dynamics: variation in abundance over space and time. *Biodiversity and Conservation*, 27, 1221–1238. <https://doi.org/10.1007/s10531-017-1489-3>.
- Díaz, S. M., Settele, J., Brondízio, E., et al (2019). *The global assessment report on biodiversity and ecosystem services: Summary for policy makers* (Vol. 56). Intergovernmental Science-Policy Platform on Biodiversity and Ecosystem Services.
- Dirzo, R., Young, H. S., Galetti, M., Ceballos, G., Isaac, N. J., & Collen, B. (2014). Defaunation in the Anthropocene. *Science*, 345(6195), 401–406. <https://doi.org/10.1126/science.1251817>
- Elias, F., Ferreira, J., Lennox, G. D., et al (2020). Assessing the growth and climate sensitivity of secondary forests in highly deforested Amazonian landscapes. *Ecology*, 101(3), e02954. <https://doi.org/10.1002/ecy.2954>.
- Estrada, A., Raboy, B. E., & Oliveira, L. C. (2012). Agroecosystems and primate conservation in the tropics: A review. *American Journal of Primatology*, 74, 696–711. <https://doi.org/10.1002/ajp.22033>.
- Estrada, A., Garber, P. A., Rylands, A. B., et al (2017). Impending extinction crisis of the world's primates: Why primates matter. *Science Advances*, 3(1), e1600946. <https://doi.org/10.1126/sciadv.1600946>.
- Estrada, A., Garber, P. A., Mittermeier, R. A., et al (2018). Primates in peril: the significance of Brazil, Madagascar, Indonesia and the Democratic Republic of the Congo for global primate conservation. *PeerJ*, 6, e4869. <https://doi.org/10.7717/peerj.4869>.
- Evans, B. J., Supriatna, J., Andayani, N., Setiadi, M. I., Cannatella, D. C., & Melnick, D. J. (2003). Monkeys and toads define areas of endemism on Sulawesi. *Evolution*, 57(6), 1436–1443. <https://doi.org/10.1111/j.0014-3820.2003.tb00350.x>.
- Fa, J. H., & Tagg, N. (2016). Hunting and primate conservation. In S. A. Wich & A. J. Marshall (Eds.), *An introduction to primate conservation* (pp. 143–156). Oxford University Press.
- Fa, J. E., & Yuste, J. G. (2001). Commercial bushmeat hunting in the Monte Mitra forests, Equatorial Guinea: extent and impact. *Animal Biodiversity and Conservation*, 24(1), 31–52.
- Field, A. P. (2005). *Discovering statistics using SPSS*. 2nd Edition, Sage Publications, London
- Figel, J. J., Hambal, M., Krisna, I., Putra, R., & Yansyah, D. (2021). Malignant Snare Traps Threaten an Irreplaceable Megafauna Community. *Tropical Conservation Science*. <https://doi.org/10.1177/1940082921989187>.
- Forstmeier, W., & Schielzeth, H. (2011). Cryptic multiple hypotheses testing in linear models: overestimated effect sizes and the winner's curse. *Behavioral Ecology and Sociobiology*, 65(1), 47–55. <https://doi.org/10.1007/s00265-010-1038-5>.
- Fotang, C., Bröring, U., Roos, C., et al (2021). Human activity and forest degradation threaten populations of the Nigeria–Cameroon chimpanzee (*Pan troglodytes ellioti*) in Western Cameroon. *International Journal of Primatology*, 42, 105–129. <https://doi.org/10.1007/s10764-020-00191-2>.
- Galán-Acedo, C., Arroyo-Rodríguez, V., Cudney-Valenzuela, S. J., & Fahrig, L. (2019). A global assessment of primate responses to landscape structure. *Biological Reviews*, 94(5), 1605–1618.
- Garber, P. A., McKenney, A., Bartling-John, E., et al (2020). Life in a harsh environment: the effects of age, sex, reproductive condition, and season on hair cortisol concentration in a wild non-human primate. *PeerJ*, 8, e9365. <https://doi.org/10.7717/peerj.9365>.
- Gomez-Melara, J. L., Acosta-Naranjo, R., Castellano-Navarro, A., et al (2021). Dominance style predicts differences in food retrieval strategies. *Scientific Reports*, 11, 2726. <https://doi.org/10.1038/s41598-021-82198-0>.
- Graham, T. L., Matthews, H. D., & Turner, S. E. (2016). A global-scale evaluation of primate exposure and vulnerability to climate change. *International Journal of Primatology*, 37, 158–174. <https://doi.org/10.1007/s10764-016-9890-4>.
- Gray, C., Hill, S., Newbold, T., et al (2016). Local biodiversity is higher inside than outside terrestrial protected areas worldwide. *Nature Communications*, 7, 12306. <https://doi.org/10.1038/ncomms12306>.
- Gray, T. N. E., Hughes, A. C., Laurance, W. F., et al (2018). The wildlife snaring crisis: an insidious and pervasive threat to biodiversity in Southeast Asia. *Biodiversity and Conservation*, 27, 1031–1037. <https://doi.org/10.1007/s10531-017-1450-5>.

- Halpern, B. S., Walbridge, S., Selkoe, K. A., et al (2008). A global map of human impact on marine ecosystems. *Science*, 319(5865), 948–952. <https://doi.org/10.1126/science.1149345>
- Hansen, M. C., Potapov, P. V., Moore, R., et al (2013). High-resolution global maps of 21st-century forest cover change. *Science*, 342(6160), 850–853. <https://doi.org/10.1126/science.1244693>
- Hanson, K. T., & Riley, E. P. (2018). Beyond neutrality: The human–primate interface during the habituation process. *International Journal of Primatology*, 39(5), 852–877. <https://doi.org/10.1007/s10764-017-0009-3>
- Harcourt, A. (1995). Population viability estimates: Theory and practice for a wild gorilla population. *Conservation Biology*, 9, 134–142. <https://doi.org/10.1046/j.1523-1739.1995.09030134.x>
- Hartig, F. (2021). DHARMA: Residual Diagnostics for Hierarchical (Multi-Level / Mixed) Regression Models. R package version 0.4.3. <http://florianhartig.github.io/DHARMA>. Accessed March 2021
- Healey, R. M., Atutubo, J. R., Kusri, M. D., Howard, L., Page, F., Hallisey, N., & Karraker, N. E. (2020). Road mortality threatens endemic species in a national park in Sulawesi, Indonesia. *Global Ecology and Conservation*, 24, e01281. <https://doi.org/10.1016/j.gecco.2020.e01281>
- Hernández Tienda, C., Beltrán Francés, V., Majolo, B., et al (2021). Reaction to Snakes in Wild Moor Macaques (*Macaca maura*). *International Journal of Primatology*, 42, 528–532. <https://doi.org/10.1007/s10764-021-00230-6>
- Higgitt, R. L., Van Schalkwyk, O. L., de Klerk-Lorist, L. M., et al (2019). Mycobacterium bovis Infection in African Wild Dogs, Kruger National Park, South Africa. *Emerging Infectious Diseases*, 25(7), 1425–1427. <https://doi.org/10.3201/eid2507.181653>
- IUCN/SSC (2019). *The International Union for Conservation of Nature/Species Survival Commission Primate Specialist Group: An Assessment of Endangered Primates*. Gland, Switzerland
- Johnson, N., Aréchiga-Ceballos, N., & Aguilar-Setien, A. (2014). Vampire bat rabies: ecology, epidemiology and control. *Viruses*, 6, 1911–1928. <https://doi.org/10.3390/v6051911>
- Jones, B. A., Grace, D., Kock, R., et al (2013). Zoonosis emergence linked to agricultural intensification and environmental change. *Proceedings of the National Academy of Sciences*, 110, 8399–8404. <https://doi.org/10.1073/pnas.1208059110>
- Jori, F., Hernandez-Jover, M., Magouras, I., Dürr, S., & Brookes, V. J. (2021). Wildlife-livestock interactions in animal production systems: what are the biosecurity and health implications? *Animal Frontiers*, 11(5), 8–19. <https://doi.org/10.1093/af/vfab045>
- Junker, J., Petrovan, S. O., Arroyo-Rodríguez, V., et al (2020). A severe lack of evidence limits effective conservation of the world's primates. *BioScience*, 70(9), 794–803.
- Kelley, L. C. (2018). The politics of uneven smallholder cacao expansion: A critical physical geography of agricultural transformation in Southeast Sulawesi, Indonesia. *Geoforum*, 97, 22–34. <https://doi.org/10.1016/j.geoforum.2018.10.006>
- Kiffner, C., Kioko, J., Baylis, J., et al (2020). Long-term persistence of wildlife populations in a pastoral area. *Ecology and Evolution*, 10, 10000–10016. <https://doi.org/10.1002/ece3.6658>
- Kirkpatrick, L., Maher, S. J., Lopez, Z., Lintott, P. R., Bailey, S. A., Dent, D., & Park, K. J. (2017). Bat use of commercial coniferous plantations at multiple spatial scales: Management and conservation implications. *Biological Conservation*, 206, 1–10. <https://doi.org/10.1016/j.biocon.2016.11.018>
- Kuhl, H., Maisels, F., Ancrenaz, M., & Williamson, E. A. (2008). Best Practice Guidelines for Surveys and Monitoring of Great Ape Populations.
- Kumar, V., & Sankhyani, V. (2021). Musculoskeletal injuries: prevalence and severity in free-range rhesus macaques (*Macaca mulatta*) of Himalayan Shivalik Hills, Northern India. *Biological Rhythm Research*, 52(7), 1044–1054.
- Labahi, A. (2010). *Kepadatan populasi dan perilaku penyerangan monyet dare (Macaca maura), pada tanaman pertanian di hutan pendidikan dan pelatihan Tabo-Tabo, Kabupaten Pangkep, Propinsi Sulawesi Selatan, Kehutanan, Konservasi Sumber Daya Hutan*. Thesis, Universitas Gadjah Mada. Yogyakarta.
- Latinne, A., Saputro, S., Kalengkongan, J., et al (2020). Characterizing and quantifying the wildlife trade network in Sulawesi, Indonesia. *Global Ecology and Conservation*, 21, e00887.
- Lee, T. M., Sodhi, N. S., & Prawiradilaga, D. M. (2007). The importance of protected areas for the forest and endemic avifauna of Sulawesi (Indonesia). *Ecological Applications*, 17, 1727–1741. <https://doi.org/10.1890/06-1256.1>
- Lee, R., Riley, E., Sangermano, F., Cannon, C., & Shekelle, M. (2020). *Macaca maura*. The IUCN Red List of Threatened Species 2020: e.T12553A197831931. <https://dx.doi.org/10.2305/IUCN.UK.2020-3.RLTS.T12553A197831931.en>. Accessed 09 February 2021

- Lewis, S. L., Edwards, D. P., & Galbraith, D. (2015). Increasing human dominance of tropical forests. *Science*, 349(6250), 827–832. <https://doi.org/10.1126/science.aaa9932>.
- Li, Z., & Rogers, M. E. (2005). Are limestone hills a refuge or essential habitat for white-headed langurs in Fusui, China? *International Journal of Primatology*, 26, 437–452. <https://doi.org/10.1007/s10764-005-2932-y>.
- Luskin, M. S., Meijaard, E., Surya, S., Walzer, C., & Linkie, M. (2021). African Swine Fever threatens Southeast Asia's 11 endemic wild pig species. *Conservation Letters*, 14(3), e12784.
- Malik, A., Fensholt, R., & Mertz, O. (2015). Mangrove exploitation effects on biodiversity and ecosystem services. *Biodiversity and Conservation*, 24, 3543–3557. <https://doi.org/10.1007/s10531-015-1015-4>.
- Marsh, L. K., & Chapman, C. A. (2013). *Primates in fragments*. Springer
- Marshall, A. R., Lovett, J. C., & White, P. C. (2008). Selection of line-transect methods for estimating the density of group-living animals: lessons from the primates. *American Journal of Primatology*, 70, 452–462. <https://doi.org/10.1002/ajp.20516>.
- Marques, T. A., Buckland, S. T., Borchers, D. L., Rexstad, E. G., & Thomas, L. (2011). Distance Sampling. *International Encyclopedia of Statistical Science*, 1, 398–400.
- Meijaard, E., & Nijman, V. (2000). The local extinction of the proboscis monkey *Nasalis larvatus* in Pulau Kaget Nature Reserve, Indonesia. *Oryx*, 34(1), 66–70. <https://doi.org/10.1046/j.1365-3008.2000.00095.x>.
- Milda, D., Ramesh, T., Kalle, R., Gayathri, V., & Thanikodi, M. (2020). Ranger survey reveals conservation issues across Protected and outside Protected Areas in southern India. *Global Ecology and Conservation*, 24, e01256.
- Morrow, K. S., Glanz, H., Ngakan, P. O., & Riley, E. P. (2019). Interactions with humans are jointly influenced by life history stage and social network factors and reduce group cohesion in moor macaques (*Macaca maura*). *Scientific Reports*, 9, 20162. <https://doi.org/10.1038/s41598-019-56288-z>.
- Munn, J. (2006). Effects of Injury on the Locomotion of Free-Living Chimpanzees in the Budongo Forest Reserve, Uganda. In N. E. Newton-Fisher, H. Notman, J. D. Paterson, & V. Reynolds (Eds.), *Primates of Western Uganda. Developments in Primatology: Progress and Prospects*. Springer. [https://doi.org/10.1007/978-0-387-33505-6\\_15](https://doi.org/10.1007/978-0-387-33505-6_15).
- Mwenja, I. (2007). A new population of De Brazza's monkey in Kenya. *Primate Conservation*, 22(1), 117–122. <https://doi.org/10.1896/052.022.0111>.
- Nekaris, K. A. I., Poindexter, S., Reinhardt, K. D., et al (2017). Coexistence between Javan Slow Lorises (*Nycticebus javanicus*) and Humans in a Dynamic Agroforestry Landscape in West Java, Indonesia. *International Journal of Primatology*, 38, 303–320. <https://doi.org/10.1007/s10764-017-9960-2>.
- Okamoto, K., Matsumura, S., & Watanabe, K. (2000). Life history and demography of wild moor macaques (*Macaca maurus*): Summary of ten years of observations. *American Journal of Primatology*, 52, 1–11. [https://doi.org/10.1002/1098-2345\(200009\)52:1<1::AID-AJP1>3.0.CO;2-F](https://doi.org/10.1002/1098-2345(200009)52:1<1::AID-AJP1>3.0.CO;2-F).
- Parmesan, C., & Yohe, G. (2003). A globally coherent fingerprint of climate change impacts across natural systems. *Nature*, 421(6918), 37–42. <https://doi.org/10.1038/nature01286>
- Phalan, B., Bertzky, M., Butchart, S. H., Donald, P. F., Scharlemann, J. P., Stattersfield, A. J., & Balmford, A. (2013). Crop expansion and conservation priorities in tropical countries. *PloS One*, 8(1), e51759. <https://doi.org/10.1371/journal.pone.0051759>
- Plumptre, A. J., & Reynolds, V. (1994). The effect of selective logging on the primate populations in the Budongo Forest Reserve, Uganda. *Journal of Applied Ecology*, 31(4), 631–641. <https://doi.org/10.2307/2404154>.
- Plumptre, A. J., Baisero, D., Belote, R. T., et al (2021). Where might we find ecologically intact communities?. *Frontiers in Forests and Global Change*, 4, 26. <https://doi.org/10.3389/ffgc.2021.626635>
- Quiatt, D., Reynolds, V., & Stokes, E. J. (2002). Snare injuries to chimpanzees (*Pan troglodytes*) at 10 study sites in east and west Africa. *African Journal of Ecology*, 40, 303–305. <https://doi.org/10.1046/j.1365-2028.2002.00356.x>.
- R Development Core Team. (2013). *R: A language and environment for statistical computing. Version 3.5.2*. R Foundation for Statistical Computing, Vienna, Austria. <http://www.R-project.org>
- Riley, E. P. (2010). The endemic seven: Four decades of research on the Sulawesi macaques. *Evolutionary Anthropology*, 19, 22–36. <https://doi.org/10.1002/evan.20246>.
- Riley, E. P., & Priston, N. E. (2010). Macaques in farms and folklore: exploring the human–nonhuman primate interface in Sulawesi, Indonesia. *American Journal of Primatology*, 72, 848–854. <https://doi.org/10.1002/ajp.20798>.

- Riley, E. P., Sagnotti, C., Carosi, M., & Oka, N. P. (2014). Socially tolerant relationships among wild male moor macaques (*Macaca maura*). *Behaviour*, *151*, 1021–1044. <https://doi.org/10.1163/1568539X-00003182>.
- Riley, E. P., MacKinnon, K. C., Fernandez-Duque, E., Setchell, J. M., Garber, P. A. (2014). Code of best practices for field primatology. *Resour. doc., Int. Primatol. Soc., Am. Soc. Primatol.* <https://www.asp.org/resources/docs/Code%20of%20Best%20Practices%20Oct%202014.pdf>
- Riley, E. P., Shaffer, C. A., Trinidad, J. S., et al (2021). Roadside monkeys: Anthropogenic effects on moor macaque (*Macaca maura*) ranging behavior in Bantimurung Bulusaraung National Park, Sulawesi, Indonesia. *Primates*, *62*, 477–489. <https://doi.org/10.1007/s10329-021-00899-6>.
- Rosenbaum, B., O'Brien, T. G., Kinnaird, M., & Supriatna, J. (1998). Population densities of Sulawesi crested black macaques (*Macaca nigra*) on Bacan and Sulawesi, Indonesia: Effects of habitat disturbance and hunting. *American Journal of Primatology*, *44*(2), 89–106. [https://doi.org/10.1002/\(SICI\)1098-2345\(1998\)44:2<89::AID-AJP1>3.0.CO;2-S](https://doi.org/10.1002/(SICI)1098-2345(1998)44:2<89::AID-AJP1>3.0.CO;2-S).
- Sha, J. C. M., Gumert, M. D., Lee, B. P. Y. H., et al (2009). Status of the long-tailed macaque *Macaca fascicularis* in Singapore and implications for management. *Biodiversity and Conservation*, *18*, 2909–2926. <https://doi.org/10.1007/s10531-009-9616-4>.
- Sih, A. (2013). Understanding variation in behavioural responses to human-induced rapid environmental change: a conceptual overview. *Animal Behaviour*, *85*(5), 1077–1088. <https://doi.org/10.1016/j.anbehav.2013.02.017>
- Southwick, C. H., & Cadigan, F. C. (1972). Population studies of Malaysian primates. *Primates*, *13*(1), 1–18.
- Spaan, D., Ramos-Fernández, G., Schaffner, C. M., et al (2019). Standardizing methods to estimate population density: an example based on habituated and unhabituated spider monkeys. *Biodiversity and Conservation*, *28*, 847–862. <https://doi.org/10.1007/s10531-018-01696-2>.
- Spaan, D., Ramos-Fernández, G., Bonilla-Moheno, M., et al (2020). Anthropogenic habitat disturbance and food availability affect the abundance of an endangered primate: a regional approach. *Mammalian Biology*, *100*, 325–333. <https://doi.org/10.1007/s42991-020-00025-x>.
- Stewart, B. M., Turner, S. E., & Matthews, H. D. (2020). Climate change impacts on potential future ranges of non-human primate species. *Climatic Change*, *162*, 2301–2318. <https://doi.org/10.1007/s10584-020-02776-5>.
- Stokes, E. J., Strindberg, S., Bakabana, P. C., et al (2010). Monitoring great ape and elephant abundance at large spatial scales: measuring effectiveness of a conservation landscape. *PLoS One*, *5*(4), e10294. <https://doi.org/10.1371/journal.pone.0010294>.
- Struhsaker, T., & Eisenberg, J. (1981). *Techniques for the study of primate population ecology*. National Academy Press.
- Supriatna, J. (2019). *Field guide to the primates of Indonesia*. Yayasan Pustaka Obor.
- Supriatna, J., Froehlich, J. W., Erwin, J., & Southwick, C. (1992). Population, habitat and conservation status of *Macaca maurus*, *Macaca tonkeana* and their putative hybrids. *Tropical Biodiversity*, *1*(1), 31–48.
- Supriatna, J., Shekelle, M. & Burton, J. (2008). *Macaca maura*. In: *The IUCN Red List of Threatened Species. Version 2014.3*. Available at: [www.iucnredlist.org](http://www.iucnredlist.org). Accessed 11 February 2021
- Supriatna, J., Winarni, N., & Dwiyaheni, A. A. (2015). Primates of Sulawesi: an update on habitat, distribution, population and conservation. *Taprobanica*, *7*(3), 170.
- Supriatna, J., Shekelle, M., Fuad, H. A., et al (2020). Deforestation on the Indonesian island of Sulawesi and the loss of primate habitat. *Global Ecol Conserv*, *24*, e01205.
- Thomas, L., Buckland, S. T., Rexstad, E. A., et al (2010). Distance software: Design and analysis of distance sampling surveys for estimating population size. *Journal of Applied Ecology*, *47*, 5–14. <https://doi.org/10.1111/j.1365-2664.2009.01737.x>.
- Valente, A. M., Marques, T. A., Fonseca, C., & Torres, R. T. (2016). A new insight for monitoring ungulates: density surface modelling of roe deer in a Mediterranean habitat. *European Journal of Wildlife Research*, *62*(5), 577–587. <https://doi.org/10.1007/s10344-016-1030-0>
- van Schaik, C. P., & Brockman, D. K. (2005). Seasonality in primate ecology, reproduction, and life history. In D. K. Brockman & C. P. van Schaik (Eds.), *Seasonality in primates: Studies of living and extinct human and non-human primates* (pp. 3–20). University Press.
- Waller, J. C., & Reynolds, V. (2001). Limb injuries resulting from snares and traps in chimpanzees (*Pan troglodytes schweinfurthii*) of the Budongo Forest, Uganda. *Primates*, *42*(2), 135–139. <https://doi.org/10.1007/BF02558140>.

- Waluyo, H., Sadikin, S. R., & Gustami & Whiting, P. (2005). An economic valuation of biodiversity in the karst area of Maros, south Sulawesi, Indonesia. *Biodiversity*, 6(2), 24–26. <https://doi.org/10.1080/14888386.2005.9712763>.
- Waterman, J.O. (2021). Within-group consequences of the risk and occurrence of between-group conflict in crested macaques (*Macaca nigra*). Unpublished PhD thesis, Liverpool John Moores University.
- Whitten, T., & Henderson, G. S. (2012). *Ecology of Sulawesi*. Tuttle Publishing.
- Wich, S. A., & Marshall, A. J. (2016). *An introduction to primate conservation*. Oxford University Press.
- Wilson, C. C., & Wilson, W. L. (1975). Methods censusing forest-dwelling primates. In S. Kondo, M. Kawai, & E. Ehara (Eds.), *Contemporary Primatology* (pp. 345–350). Karger.
- Worman, C. O. D., & Chapman, C. A. (2006). Densities of two frugivorous primates with respect to forest and fragment tree species composition and fruit availability. *International Journal of Primatology*, 27, 203–225. <https://doi.org/10.1007/s10764-005-9007-y>.
- Yersin, H., Asimwe, C., Voordouw, M. J., et al (2017). Impact of Snare Injuries on Parasite Prevalence in Wild Chimpanzees (*Pan troglodytes*). *International Journal of Primatology*, 38, 21–30. <https://doi.org/10.1007/s10764-016-9941-x>.
- Zak, A. A., & Riley, E. P. (2017). Comparing the use of camera traps and farmer reports to study crop feeding behavior of moor macaques (*Macaca maura*). *International Journal of Primatology*, 38(2), 224–242. <https://doi.org/10.1007/s10764-016-9945-6>

## Authors and Affiliations

Víctor Beltrán Francés<sup>1</sup> · Denise Spaan<sup>2</sup> · Federica Amici<sup>3,4</sup> ·  
Risma Illa Maulany<sup>5</sup> · Ngakan Putu Oka<sup>5</sup> · Bonaventura Majolo<sup>6</sup> 

✉ Bonaventura Majolo  
bmajolo@lincoln.ac.uk

<sup>1</sup> Fundació Universitat de Girona, Innovació i Formació, Girona, Spain

<sup>2</sup> Instituto de Neuroetología, Universidad Veracruzana, Xalapa, Veracruz, Mexico

<sup>3</sup> Behavioral Ecology Research Group, Institute of Biology, Faculty of Life Science, University of Leipzig, Leipzig, Germany

<sup>4</sup> Department of Human Behavior, Ecology and Culture, Research Group Primate Behavioural Ecology, Max-Planck Institute for Evolutionary Anthropology, Leipzig, Germany

<sup>5</sup> Forestry Department, Hasanuddin University, Makassar, Sulawesi, Indonesia

<sup>6</sup> School of Psychology, University of Lincoln, Lincoln, UK

ORIGINALITY REPORT

19%

SIMILARITY INDEX

17%

INTERNET SOURCES

9%

PUBLICATIONS

4%

STUDENT PAPERS

PRIMARY SOURCES

1	<a href="http://www.eva.mpg.de">www.eva.mpg.de</a> Internet Source	6%
2	<a href="http://repository.tudelft.nl">repository.tudelft.nl</a> Internet Source	2%
3	<a href="http://en.wikipedia.org">en.wikipedia.org</a> Internet Source	1%
4	Víctor Beltrán Francés, Alba Castellano - Navarro, Risma Illa Maulany, Putu O. Ngakan et al. " Play behavior in immature moor macaques ( ) and Japanese macaques ( ) ", American Journal of Primatology, 2020 Publication	1%
5	<a href="http://pure.mpg.de">pure.mpg.de</a> Internet Source	<1%
6	<a href="http://academic.oup.com">academic.oup.com</a> Internet Source	<1%
7	<a href="http://ediss.uni-goettingen.de">ediss.uni-goettingen.de</a> Internet Source	<1%
8	Clara Hernández Tienda, Víctor Beltrán Francés, Bonaventura Majolo, Teresa Romero et al. "Reaction to Snakes in Wild Moor Macaques (Macaca maura)", International Journal of Primatology, 2021 Publication	<1%
9	<a href="http://bioone.org">bioone.org</a> Internet Source	<1%
10	Submitted to University of North Florida Student Paper	

<1 %

11

Submitted to University of Leeds

Student Paper

<1 %

12

[www.karger.com](http://www.karger.com)

Internet Source

<1 %

13

[mafiadoc.com](http://mafiadoc.com)

Internet Source

<1 %

14

[ul.qucosa.de](http://ul.qucosa.de)

Internet Source

<1 %

15

[www.threatenedtaxa.org](http://www.threatenedtaxa.org)

Internet Source

<1 %

16

[repository.up.ac.za](http://repository.up.ac.za)

Internet Source

<1 %

17

[atrium.lib.uoguelph.ca](http://atrium.lib.uoguelph.ca)

Internet Source

<1 %

18

[digitalcommons.cwu.edu](http://digitalcommons.cwu.edu)

Internet Source

<1 %

19

[www.zora.uzh.ch](http://www.zora.uzh.ch)

Internet Source

<1 %

20

Jatna Supriatna. "Field Guide to the Primates of Indonesia", Springer Science and Business Media LLC, 2022

Publication

<1 %

21

Vinícius Freitas Klain, Márcia Bohrer Mentz, Sebastián Bustamante-Manrique, Júlio César Bicca-Marques. "Habitat Patch Size and Landscape Structure Influence, Although Weakly, the Parasite Richness of an Arboreal Folivorous-frugivorous Primate in Anthropogenic Landscapes", Research Square Platform LLC, 2021

Publication

<1 %

22	<a href="http://bmcpublichealth.biomedcentral.com">bmcpublichealth.biomedcentral.com</a> Internet Source	<1 %
23	<a href="http://mountainscholar.org">mountainscholar.org</a> Internet Source	<1 %
24	<a href="http://www.psych.uni-goettingen.de">www.psych.uni-goettingen.de</a> Internet Source	<1 %
25	<a href="http://helda.helsinki.fi">helda.helsinki.fi</a> Internet Source	<1 %
26	<a href="http://ir.canterbury.ac.nz">ir.canterbury.ac.nz</a> Internet Source	<1 %
27	<a href="http://journals.sagepub.com">journals.sagepub.com</a> Internet Source	<1 %
28	<a href="http://www.mdpi.com">www.mdpi.com</a> Internet Source	<1 %
29	Addisu Mekonnen, Peter J. Fashing, Afework Bekele, R. Adriana Hernandez-Aguilar, Eli K. Rueness, Nga Nguyen, Nils Chr. Stenseth. " Impacts of habitat loss and fragmentation on the activity budget, ranging ecology and habitat use of Bale monkeys ( ) in the southern Ethiopian Highlands ", American Journal of Primatology, 2017 Publication	<1 %
30	Ramesh Boonratana. "Asian primates in fragments: Understanding causes and consequences of fragmentation, and predicting primate population viability", American Journal of Primatology, 2019 Publication	<1 %
31	<a href="http://hdl.handle.net">hdl.handle.net</a> Internet Source	<1 %
32	<a href="http://spiral.imperial.ac.uk">spiral.imperial.ac.uk</a> Internet Source	<1 %

- |    |   |      |
|----|---|------|
| 33 | Indonesian Primates, 2010.<br>Publication   | <1 % |
| 34 | Lucas P. Medeiros, Stefano Allesina, Vasilis Dakos, George Sugihara, Serguei Saavedra. "Ranking species based on sensitivity to perturbations under non-equilibrium community dynamics", Cold Spring Harbor Laboratory, 2022<br>Publication                           | <1 % |
| 35 | <a href="https://journals.plos.org">journals.plos.org</a><br>Internet Source  | <1 % |
| 36 | <a href="http://www.iucnredlist.org">www.iucnredlist.org</a><br>Internet Source   | <1 % |
| 37 | "Primate Life Histories, Sex Roles, and Adaptability", Springer Science and Business Media LLC, 2018<br>Publication   | <1 % |
| 38 | Daniel Mbouombouo Mfossa, Eva Gazagne, Russell J. Gray, Marcel Eyong. Ketchen et al. "Montane Grassland Resources Drive Gorilla (Gorilla Gorilla) Nesting Behaviours in the Ebo Forest, Littoral Region, Cameroon", Research Square Platform LLC, 2022<br>Publication | <1 % |
| 39 | Stephen T. Buckland, Andrew J. Plumptre, Len Thomas, Eric A. Rexstad. "Line Transect Sampling of Primates: Can Animal-to-Observer Distance Methods Work?", International Journal of Primatology, 2010<br>Publication  | <1 % |
| 40 | <a href="https://besjournals.onlinelibrary.wiley.com">besjournals.onlinelibrary.wiley.com</a><br>Internet Source  | <1 % |
| 41 | <a href="https://docplayer.info">docplayer.info</a><br>Internet Source  | <1 % |

42	<a href="https://dspace.stir.ac.uk">dspace.stir.ac.uk</a> Internet Source	<1 %
43	<a href="https://idl-bnc-idrc.dspacedirect.org">idl-bnc-idrc.dspacedirect.org</a> Internet Source	<1 %
44	<a href="https://ndl.ethernet.edu.et">ndl.ethernet.edu.et</a> Internet Source	<1 %
45	<a href="https://open.uct.ac.za">open.uct.ac.za</a> Internet Source	<1 %
46	<a href="https://orbi.uliege.be">orbi.uliege.be</a> Internet Source	<1 %
47	<a href="https://repository.udca.edu.co">repository.udca.edu.co</a> Internet Source	<1 %
48	<a href="https://scholar.sun.ac.za">scholar.sun.ac.za</a> Internet Source	<1 %
49	<a href="https://sjes.springeropen.com">sjes.springeropen.com</a> Internet Source	<1 %
50	<a href="https://vdoc.pub">vdoc.pub</a> Internet Source	<1 %
51	Jatna Supriatna, Myron Shekelle, Habiburrahman A.H. Fuad, Nurul.L. Winarni et al. "Deforestation on the Indonesian island of Sulawesi and the loss of primate habitat", Global Ecology and Conservation, 2020 Publication	<1 %
52	<a href="https://academicworks.cuny.edu">academicworks.cuny.edu</a> Internet Source	<1 %

Exclude quotes  On

Exclude matches  < 5 words

Exclude bibliography  On